

ENGLISH
FRANÇAIS



Quick Start Guide




Printed in XXXXX

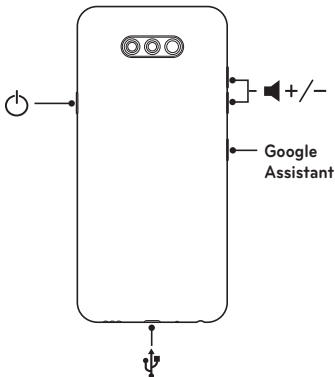
MBM67468201 (1.0)



LM-K300WM

Overview

To turn on the device, press and hold the  for a few seconds.



For more information

Visit www.lg.com/ca_en to view the user guide and more information.



Do NOT attempt to remove the back cover.

This device has a non-removable battery. Do not attempt to remove the back cover. Doing so may severely damage the battery and device, which could cause overheating, fire, and injury.



Restarting the device

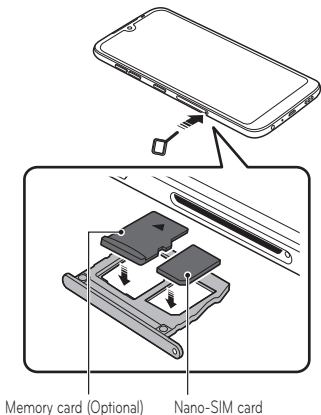
If the device becomes unresponsive, simply press and hold the Volume Down key and Power key at the same time until the device restarts.



- Screen-protective film or accessories may interfere with the proximity sensor.

Installing the SIM card and memory card

Insert the SIM card and memory card with their gold-coloured contacts facing downwards as shown in the figure.





Always use a genuine SIM card supplied by the operator.

Read before use

- To purchase optional items, contact the LG Customer Information Centre for available dealers.
- The device apps, services, illustrations and content may differ depending on the area, service provider, software version and device, and are subject to change without notice.
- Do not use LG products for other purposes than those originally intended. Using non-certified apps, hardware, or software may damage the device and this is not covered by the limited warranty.

For Your Safety

Important Information

This user guide contains important information on the use and operation of this device. Please read all the information carefully for optimal performance and to prevent any damage to or misuse of the device. Any changes or modifications not expressly approved in this user guide could void your warranty for this equipment.

Before You Start

Safety Instructions



To reduce the possibility of electric shock, do not expose your device to high humidity areas, such as the bathroom, swimming pool, etc.

Be careful when using your device near other electronic devices. RF emissions from your mobile device may affect nearby inadequately shielded electronic equipment. You should consult with manufacturers of any personal medical devices such as pacemakers and hearing aids to determine if they are susceptible to interference from your mobile device.

Turn off your device in a medical facility or at a gas station.

Safety Information

Read these simple guidelines. Breaking the rules may be dangerous or illegal. Further detailed information is given in this user guide. Never use an unapproved battery since this could damage the device and/or battery and could cause the battery to explode.

- Never place your device in a microwave oven as it will cause the battery to explode.
- Your device contains an internal battery. Do not dispose of your battery by fire or with hazardous or flammable materials.
- Make sure that no sharp-edged items come into contact with the battery. There is a risk of this causing a fire.

- Be careful that children do not swallow any parts such as rubber plugs (earphone, connection parts of the device, etc.). This could cause asphyxiation or suffocation.
- Unplug the power cord and charger during lightning storms to avoid electric shock or fire.
- When riding in a car, do not leave your device or set up the hands-free kit near the air bag. If wireless equipment is improperly installed and the air bag is activated, you may be seriously injured.
- Do not use the device while driving.
- Do not use the device in areas where its use is prohibited. (For example: aircraft).
- Do not expose the battery charger or adapter to direct sunlight or use it in places with high humidity, such as a bathroom.
- Do not use harsh chemicals (such as alcohol, benzene, thinners, etc.) or detergents to clean your device. There is a risk of this causing a fire.
- Do not drop, strike, or shake your device severely. Such actions may harm the internal circuit boards of the device.
- Do not use your device in high explosive areas as the device may generate sparks.
- Do not use the plug if it is loose as it may cause a fire or an electric shock.
- Do not damage the power cord by bending, twisting, pulling, or heating. Do not place any heavy items on the power cord. Do not allow the power cord to be crimped as it may cause a fire or an electric shock.
- Do not handle the device with wet hands while it is being charged. It may cause an electric shock or seriously damage your device.
- Do not disassemble the device.
- Do not place or answer calls while charging the device as it may short-circuit the device and/or cause a fire or an electric shock.

For Your Safety

- Only use the batteries, antennas, and chargers provided by LG. The warranty will not be applied to products provided by other suppliers.
- Only authorized personnel should service the device and its accessories. Faulty installation or service may result in accidents and consequently invalidate the warranty.
- Do not hold or let the antenna come in contact with your body during a call.
- For an emergency call, make sure that you are within a service area and that the device is turned on.
- Use accessories, such as earphones and headsets, with caution. Ensure that cables are tucked away safely and do not touch the antenna unnecessarily.
- Use and store your device in temperatures between 0 °C/32 °F and 40 °C/104 °F, if possible. Exposing your device to extremely low or high temperatures may result in damage, malfunction, or even an explosion.
- A mobile device requires proper air circulation in order to dissipate heat. Direct skin contact and inadequate circulation of air flow to the device may cause the device to overheat. The device must be at least 1.0 cm (0.39 inches) away from the user's body.
- Prevent dust or any other foreign substances from getting into the Charger/USB cable port. It may cause heat or fire.
- Do not expose the device to extremely low air pressure at high altitudes. Doing so may cause the battery to explode and/or leak out flammable liquid or gas.

FCC RF Exposure Information



Read this information before operating the device.

In August 1996, the Federal Communications Commission (FCC) of the United States, with its action in Report and Order FCC 96-326, adopted an updated safety standard for human exposure to radio frequency (RF) electromagnetic energy emitted by FCC regulated transmitters. Those guidelines are consistent with the safety standard previously set by both U.S. and international standards bodies. The design of this device complies with the FCC guidelines and these international standards.

Body-worn Operation

This device was tested for typical body-worn operations with the back of the device kept 1 cm (0.39 inches) between the user's body and the back of the device. To comply with FCC/ISED RF exposure requirements, a minimum separation distance of 1 cm (0.39 inches) must be maintained between the user's body and the back of the device.

Any belt-clips, holsters, and similar accessories containing metallic components may not be used.

Body-worn accessories that cannot maintain 1 cm (0.39 inches) separation distance between the user's body and the back of the device, and have not been tested for typical bodyworn operations may not comply with FCC/ISED RF exposure limits and should be avoided.

FCC Part 15 Class B Compliance

This device complies with Part 15 of FCC rules and ISED licence exempt RSS standard(s).

Operation is subject to the following two conditions:

- (1) this device may not cause interference, and
- (2) this device must accept any interference, including interference that may cause undesired operation of the device.

For Your Safety

Part 15.105 Statement

This equipment has been tested and found to comply with the limits for a class B digital device, pursuant to Part 15 of the FCC rules. These limits are designed to provide reasonable protection against harmful interference in a residential installation. This equipment generates, uses, and can radiate radio frequency energy and, if not installed and used in accordance with the instructions, may cause harmful interference with radio communications. However, there is no guarantee that interference will not occur in a particular installation. If this equipment does cause harmful interference or television reception, which can be determined by turning the equipment off and on, you can try to correct the interference by one or more of the following measures:

- Reorient or relocate the receiving antenna.
- Increase the separation between the equipment and receiver.
- Connect the equipment into an outlet on a circuit different from that to which the receiver is connected.
- Consult the dealer or an experienced radio/TV technician for help.

Cautions for Battery

- Do not disassemble.
- Do not short-circuit.
- Do not expose to high temperature: 140 °F (60 °C).
- Do not incinerate.

Battery Disposal

- Please dispose of your battery properly or bring it to your local wireless carrier for recycling.
- Your device contains an internal battery. Do not dispose of your battery by fire or with hazardous or flammable materials.

Cautions for Battery Charger and Adapter

- Using the wrong battery charger or adapter could damage your device and void your warranty.
- The battery charger or adapter is intended for indoor use only.
- Do not expose the battery charger or adapter to direct sunlight or use it in places with high humidity, such as the bathroom.

Avoid damage to your hearing

- Damage to your hearing can occur if you are exposed to loud sounds for long periods of time. We therefore recommend that you do not turn on or off the handset close to your ear. We also recommend that music and call volumes are set to a reasonable level.
- If you are listening to music whilst out and about, please ensure that the volume is at a reasonable level so that you are aware of your surroundings. This is particularly imperative when attempting to cross the street.

Safety Guidelines

TIA Safety Information

Provided herein is the complete TIA Safety Information for Wireless Handheld devices. Inclusion of the text covering Pacemakers, Hearing Aids, and Other Medical Devices is required in the owner's manual for CTIA Certification. Use of the remaining TIA language is encouraged when appropriate.

Exposure to Radio Frequency Signal

Your wireless handheld portable device is a low power radio transmitter and receiver. When it is ON, it receives and also sends out radio frequency (RF) signals. In August, 1996, the Federal Communications Commissions (FCC) adopted RF exposure guidelines with safety levels for handheld wireless devices.

Those guidelines are consistent with the safety standards previously set by both U.S. and international standards bodies:

- ANSI C95.1 (1992) *
- NCRP Report 86 (1986)
- ICNIRP (1996)

Those standards were based on comprehensive and periodic evaluations of the relevant scientific literature. For example, over 120 scientists, engineers, and physicians from universities, government health agencies, and industries reviewed the available body of research to develop the ANSI Standard (C95.1).

* American National Standards Institute; National Council on Radiation Protection and Measurements; International Commission on Non-Ionizing Radiation Protection

The design of your device complies with the FCC guidelines (and those standards).

Device Operation

NORMAL POSITION: Hold the device as you would on any telephone with the antenna pointed up and over your shoulder.

Driving

Check the laws and regulations on the use of wireless devices in the areas where you drive. Always obey them. Also, if using your device while driving, please:

- Give full attention to driving - driving safely is your first priority and responsibility;
- Use hands-free operation, if available;
- Pull off the road and park before making or answering a call if the driving conditions do require.

Electronic Devices

Most modern electronic equipment is shielded from RF signals.

However, certain electronic equipment may not be shielded against the RF signals from your wireless device.

Pacemakers

The Health Industry Manufacturers Association recommends that a minimum separation of 15.24 cm (6 inches) be maintained between a handheld wireless device and a pacemaker to avoid potential interference with the pacemaker.

This is consistent with the independent research by and recommendations of Wireless Technology Research. Persons with pacemakers:

- Should ALWAYS keep the device more than 15.24 cm (6 inches) from their pacemaker when the device is turned ON;
- Should not carry the device in a breast pocket.
- Should use the ear opposite the pacemaker to minimize the potential for interference.
- If you have any reason to suspect that interference is taking place, turn your device OFF immediately.

Hearing Aids

Some digital wireless devices may interfere with some hearing aids. In the event of such interference, you may want to consult your service provider.

Safety Guidelines

Other Medical Devices

If you use any other personal medical device, consult the manufacturer of your device to determine if they are adequately shielded from external RF energy. Your physician may be able to assist you in obtaining this information.

Health Care Facilities

Turn your device OFF in health care facilities when any regulations posted in these areas instruct you to do so. Hospitals or health care facilities may use equipment that could be sensitive to external RF energy.

Vehicles

RF signals may affect improperly installed or inadequately shielded electronic systems in motor vehicles. Check with the manufacturer or its representative regarding your vehicle. You should also consult the manufacturer of any equipment that has been added to your vehicle.

Posted Facilities

Turn your device OFF in any facility where posted notices do require.

Aircraft

FCC regulations prohibit using your device while in the air. Turn your device OFF before boarding an aircraft.

Blasting Areas

To avoid interfering with blasting operations, turn your device OFF when in a blasting area or in areas posted: 'Turn off two-way radio! Obey all signs and instructions.

Potentially Explosive Atmosphere

Turn your device OFF when in any area with a potentially explosive atmosphere and obey all signs and instructions. Sparks in such areas could cause an explosion or fire resulting in bodily injury or even death.

Areas with a potentially explosive atmosphere are often, but not always, marked clearly. Potential areas may include: fueling areas (such as gasoline stations); below deck on boats; fuel or chemical transfer or storage facilities; vehicles using liquefied petroleum gas (such as propane or butane); areas where the air contains chemicals or particles (such as grain, dust, or metal powders); and any other area where you would normally be advised to turn off your vehicle engine.

For Vehicles Equipped with an Air Bag

An air bag inflates with great force. DO NOT place objects, including either installed or portable wireless equipment, in the area over the air bag or in the air bag deployment area. If in-vehicle wireless equipment is improperly installed and the air bag inflates, it could result in serious injuries.

Safety Information

Please read and observe the following information for safe and proper use of your device and to prevent damage. Also, keep the user guide in an accessible place at all times after reading it.

Charger and Adapter Safety

The charger and adapter are intended for indoor use only.

Battery Information and Care

- Please dispose of your battery properly or take it to your local wireless carrier for recycling.
- The battery does not need to be fully discharged before recharging.
- Use only LG-approved chargers specific to your device model since they are designed to maximize battery life.
- Do not disassemble or impact the battery as it may cause an electric shock, short-circuit, and fire. Store the battery in a place out of reach of children.

Safety Guidelines

- Replace the battery when it no longer provides acceptable performance. The battery can be recharged several hundred times before needing a replacement.
- Recharge the battery after long periods of non-use to maximize battery life.
- Battery life will vary due to usage patterns and environmental conditions.
- Use of extended backlighting, Media Net Browsing, and data connectivity kits affect battery life and talk/standby times.
- Actual battery life will depend on network configuration, product settings, usage patterns, battery and environmental conditions.
- Always unplug the charger from the wall socket after the device is fully charged to save unnecessary power consumption of the charger.

Explosion, Shock, and Fire Hazards

- Do not put your device in a place subject to excessive dust and keep the minimum required distance between the power cord and heat sources.
- Unplug the power cord prior to cleaning your device, and clean the power plug pin when it is dirty.
- When using the power plug, ensure that it is firmly connected. If it is not, it may cause excessive heat or fire.
- If you put your device in a pocket or bag without covering the receptacle of the device (power plug pin), metallic articles (such as a coin, paperclip or pen) may short-circuit the device. Always cover the receptacle when not in use.
- Do not short-circuit the battery. Metallic articles in your pocket or bag may short-circuit the + and - terminals of the battery (metal strips on the battery) upon moving. Short-circuiting of the terminal may damage the battery and cause an explosion.

General Notice

- Using a damaged battery or placing a battery in your mouth may cause serious injury.
- Do not place items containing magnetic components such as a credit card, phone card, bank book or subway ticket near your device. The magnetism of the device may damage the data stored in the magnetic strip.
- Talking on your device for a long period of time may reduce call quality due to heat generated during use.
- When the device is not used for a long period of time, store it in a safe place with the power cord unplugged.
- Using the device in proximity to receiving equipment (i.e., TV or radio) may cause interference to the device.
- Do not immerse your device in water. If this happens, turn it off immediately. If the device does not work, take it to an authorized LG service centre.
- Do not paint your device.
- All data saved on your device could be deleted for a number of reasons including but not limited to: careless use, device repair, upgrading software, etc. Please back up any important data such as contacts, ring tones, text/voice messages, photos, videos, etc. The manufacturer is not liable for damage due to the loss of data.
- When you use the device in public places, set the ring tone to vibration so as not to disturb others.
- Do not turn your device on or off when putting it near your ear.
- Your device is an electronic device that generates heat during normal operation. Extremely prolonged, direct skin contact in the absence of adequate ventilation may result in discomfort or minor burns. Therefore, use care when handling your device during or immediately after operation.
- Do not attempt to repair or modify the device yourself. Your device is equipped with an internal rechargeable battery which should be replaced only by LG or an authorized LG Service Centre. You should never attempt to open or disassemble this device yourself and doing so may cause damage that will void your warranty.

Safety Guidelines

- Please ensure that the product does not get in contact with liquid. Do not use or recharge the product if it is wet. Once the product becomes wet, the liquid damage indicator changes colour. Please note that this may limit you from receiving any free-of-charge repair services provided under the manufacturer's limited warranty.

FDA Consumer Update

The U.S. Food and Drug Administration Centre for Devices and Radiological Health Consumer Update on Mobile Devices.

1. Do wireless devices pose a health hazard?

The available scientific evidence does not show that any health problems are associated with using wireless devices. There is no proof, however, that wireless devices are absolutely safe. Wireless devices emit low levels of radio frequency energy (RF) in the microwave range while being used. They also emit very low levels of RF during standby mode. Whereas high levels of RF can produce health effects (by heating tissue), exposure to low level RF that does not produce heating effects causes no known adverse health effects. Many studies of low level RF exposures have not found any biological effects. Some studies have suggested that some biological effects may occur, but such findings have not been confirmed by additional research. In some cases, other researchers have had difficulty in reproducing those studies, or in determining the reasons for inconsistent results.

2. What is the FDA's role concerning the safety of wireless devices?

Under the law, the FDA does not review the safety of radiation emitting consumer products such as wireless devices before they can be sold, as it does with new drugs or medical devices. However, the agency has authority to take action if wireless devices are shown to emit radio frequency energy (RF) at a level that is hazardous

to the user. In such a case, the FDA could require the manufacturers of wireless devices to notify users of the health hazard and to repair, replace, or recall the devices so that the hazard no longer exists.

Although the existing scientific data do not justify FDA regulatory actions, the FDA has urged the wireless device industry to take a number of steps, including the following:

- Support needed research into possible biological effects of RF emitted by wireless devices;
- Design wireless devices in a way that minimizes any RF exposure to the user that is not necessary for device function; and
- Cooperate in providing of wireless devices with the best possible information on possible effects of wireless device use on human health.

The FDA belongs to an interagency working group of the federal agencies that have responsibility for different aspects of RF safety to ensure coordinated efforts at the federal level. The following agencies belong to this working group:

- National Institute for Occupational Safety and Health
- Environmental Protection Agency
- Occupational Safety and Health Administration
- National Telecommunications and Information Administration

The National Institutes of Health participates in some interagency working group activities, as well.

The FDA shares regulatory responsibilities for wireless devices with the Federal Communications Commission (FCC). All devices that are sold in the United States must comply with FCC safety guidelines that limit RF exposure. The FCC relies on the FDA and other health agencies for safety questions about wireless devices.

The FCC also regulates the base stations that the wireless device networks rely upon. While these base stations operate at a higher power than wireless devices themselves, the RF exposure on people from these base stations is typically thousands of times lower than it is from wireless devices. Base stations are thus not the subject of the safety questions discussed in this document.

Safety Guidelines

3. What kinds of devices are the subject of this update?

The term 'wireless device' refers here to handheld wireless devices with built-in antennas, often called 'cell', 'mobile', or 'PCS' devices. These types of wireless devices can expose the user to measurable radiofrequency energy (RF) because of the short distance between the device and the user's head. These RF exposures are limited by FCC safety guidelines that were developed with the advice of the FDA and other federal health and safety agencies. When the device is located at greater distances from the user, the exposure to RF is drastically lower because a person's RF exposure decreases rapidly with increasing distance from the source. The so-called 'cordless devices,' which have a base unit connected to the device wiring in a house, typically operate at far lower power levels, and thus produce RF exposures far below the FCC safety limits.

4. What are the results of the research done already?

The research done thus far has produced conflicting results, and many studies have suffered from flaws in their research methods. Animal experiments investigating the effects of radiofrequency energy (RF) energy exposures characteristic of wireless devices have yielded conflicting results that often cannot be repeated in other laboratories. A few animal studies, however, have suggested that low levels of RF could accelerate the development of cancer in laboratory animals. However, many of the studies that showed increased tumor development used animals that had been genetically engineered or treated with cancer causing chemicals so as to be predisposed to develop cancer in the absence of RF exposure. Other studies exposed the animals to RF for up to 22 hours per day. These conditions are not similar to the conditions under which people use wireless devices, so we don't know with certainty what the results of such studies mean for human health. Three large epidemiology studies have been published since December 2000. Between them, the studies investigated any possible association between

the use of wireless devices and primary brain cancer, glioma, meningioma, or acoustic neuroma, tumors of the brain or salivary gland, leukemia, or other cancers. None of the studies demonstrated the existence of any harmful health effects from wireless device RF exposures.

However, none of the studies can answer questions about long term exposures, since the average period of device use in these studies was around three years.

5. What research is needed to decide whether RF exposure from wireless devices poses a health risk?

A combination of laboratory studies and epidemiological studies of people actually using wireless devices would provide some of the data that are needed. Lifetime animal exposure studies could be completed in a few years.

However, very large numbers of animals would be needed to provide reliable proof of a cancer promoting effect if one exists. Epidemiological studies can provide data that is directly applicable to human populations, but 10 or more years follow-up may be needed to provide answers about some health effects, such as cancer.

This is because the interval between the time of exposure to a cancer-causing agent and the time tumors develop - if they do may be many, many years. The interpretation of epidemiological studies is hampered by difficulties in measuring actual RF exposure during day-to-day use of wireless devices. Many factors affect this measurement, such as the angle at which the device is held, or which model of device is used.

6. What is the FDA doing to find out more about the possible health effects of wireless device RF?

The FDA is working with the U.S. National Toxicology Program and with groups of investigators around the world to ensure that high priority animal studies are conducted to address important questions about the effects of exposure to radiofrequency energy (RF). The FDA has been a leading participant in the World Health Organization International Electromagnetic Fields (EMF) Project since its inception in 1996. An influential result of this work has been the development of a detailed agenda of research needs that has driven the establishment of new research programs

Safety Guidelines

around the world. The project has also helped develop a series of public information documents on EMF issues. The FDA and the Cellular Telecommunications & Internet Association (CTIA) have a formal Cooperative Research and Development Agreement (CRADA) to do research on wireless device safety. The FDA provides the scientific oversight, obtaining input from experts in government, industry, and academic organizations. CTIA funded research is conducted through contracts with independent investigators. The initial research will include both laboratory studies and studies of wireless device users. The CRADA will also include a broad assessment of additional research needs in the context of the latest research developments around the world.

7. How can I find out how much radiofrequency energy exposure I can get by using my wireless device?

All devices sold in the United States must comply with Federal Communications Commission (FCC) guidelines that limit radiofrequency energy (RF) exposures. The FCC/ISED established these guidelines in consultation with the FDA and the other federal health and safety agencies. The FCC/ISED limit for RF exposure from wireless device is set at a Specific Absorption Rate (SAR) of 1.6 watts per kilogram (1.6 W/kg). The FCC/ISED limit is consistent with the safety standards developed by the Institute of Electrical and Electronic Engineering (IEEE) and the National Council on Radiation Protection and Measurement. The exposure limit takes into consideration the body's ability to remove heat from the tissues that absorb energy from the wireless device and is set well below levels known to have effects. Manufacturers of wireless devices must report the RF exposure level for each model of device to the FCC/ISED. The FCC website (<http://www.fcc.gov/oet/rfsafety>) gives directions for locating the FCC identification number on your device so you can find your device's RF exposure level in the online listing.

8. What has the FDA done to measure the radiofrequency energy coming from wireless devices?

The Institute of Electrical and Electronic Engineers (IEEE) is developing a technical standard for measuring the radiofrequency energy (RF) exposure from wireless devices and other wireless handsets with the participation and leadership of FDA scientists and engineers. The standard, 'Recommended Practice for Determining the Spatial-Peak Specific Absorption Rate (SAR) in the Human Body Due to Wireless Communications Devices: Experimental Techniques,' sets forth the first consistent test methodology for measuring the rate at which RF is deposited in the heads of wireless device users. The test method uses a tissue simulating model of the human head. Standardized SAR test methodology is expected to greatly improve the consistency of measurements made at different laboratories on the same device. SAR is the measurement of the amount of energy absorbed in tissue, either by the whole body or a small part of the body. It is measured in watts/kg (or milliwatts/g) of matter. This measurement is used to determine whether a wireless device complies with safety guidelines.

9. What steps can I take to reduce my exposure to radiofrequency energy from my wireless device?

If there is a risk from these products - and at this point we do not know that there is - it is probably very small. But if you are concerned about avoiding even potential risks, you can take a few simple steps to minimize your exposure to radiofrequency energy (RF). Since time is a key factor in how much exposure a person receives, reducing the amount of time spent using a wireless device will reduce RF exposure. If you must conduct extended conversations by wireless device every day, you could place more distance between your body and the source of the RF, since the exposure level drops off dramatically with distance. For example, you could use a headset and carry the wireless device away from your body or use a wireless device connected to a remote antenna. Again, the scientific data does not demonstrate that wireless devices are harmful. But if you are concerned about the RF exposure from these products, you can use

Safety Guidelines

measures like those described above to reduce your RF exposure from wireless device use.

10. What about children using wireless devices?

The scientific evidence does not show a danger to users of wireless devices, including children and teenagers. If you want to take steps to lower exposure to radiofrequency energy (RF), the measures described above would apply to children and teenagers using wireless devices. Reducing the time of wireless device use and increasing the distance between the user and the RF source will reduce RF exposure. Some groups sponsored by other national governments have advised that children be discouraged from using wireless devices at all. For example, the government in the United Kingdom distributed leaflets containing such a recommendation in December 2000. They noted that no evidence exists that using a wireless device causes brain tumors or other ill effects. Their recommendation to limit wireless device use by children was strictly precautionary; it was not based on scientific evidence that any health hazard exists.

11. What about wireless device interference with medical equipment?

Radiofrequency energy (RF) from wireless devices can interact with some electronic devices. For this reason, the FDA helped develop a detailed test method to measure electromagnetic interference (EMI) of implanted cardiac pacemakers and defibrillators from wireless devices. This test method is now part of a standard sponsored by the Association for the Advancement of Medical Instrumentation (AAMI). The final draft, a joint effort by the FDA, medical device manufacturers, and many other groups, was completed in late 2000. This standard will allow manufacturers to ensure that cardiac pacemakers and defibrillators are safe from wireless device EMI. The FDA has tested hearing aids for interference from handheld wireless devices and helped develop a voluntary standard sponsored

by the Institute of Electrical and Electronic Engineers (IEEE). This standard specifies test methods and performance requirements for hearing aids and wireless devices so that no interference occurs when a person uses a 'compatible' device and a 'compatible' hearing aid at the same time. This standard was approved by the IEEE in 2000. The FDA continues to monitor the use of wireless devices for possible interactions with other medical devices. Should harmful interference be found to occur, the FDA will conduct testing to assess the interference and work to resolve the problem.

12. Where can I find additional information?

Innovation, Science and Economic Development Canada
(<https://www.ic.gc.ca/eic/site/smt-gst.nsf/eng/sf09583.html>)

For additional information, please refer to the following resources: FDA web page on wireless devices
(<http://www.fda.gov/>)

Federal Communications Commission (FCC) RF Safety Program
(<http://www.fcc.gov/oet/rfsafety>)

International Commission on Non-Ionizing Radiation Protection
(<http://www.icnirp.org>)

World Health Organization (WHO) International EMF Project
(<http://www.who.int/emf>)

National Radiological Protection Board (UK)
(<http://www.nrpb.org.uk/>)

10 Driver Safety Tips

Your wireless device gives you the powerful ability to communicate by voice almost anywhere, anytime. An important responsibility accompanies the benefits of wireless devices, one that every user must uphold. When operating a car, driving is your first responsibility.

When using your wireless device behind the wheel of a car, practice good common sense and remember the following tips:

1. Get to know your wireless device and its features such as speed dial and redial. Carefully read your instruction manual and learn to take advantage of valuable features most devices offer, including automatic redial and memory. Also, work to memorize the device keypad so

Safety Guidelines

you can use the speed dial function without taking your attention off the road.

2. When available, use a handsfree device. A number of handsfree wireless device accessories are readily available today. Whether you choose an installed mounted device for your wireless device or a speaker device accessory, take advantage of these devices if available to you.
3. Position your wireless device within easy reach. Make sure you place your wireless device within easy reach and where you can reach it without removing your eyes from the road. If you get an incoming call at an inconvenient time, if possible, let your voicemail answer it for you.
4. Suspend conversations during hazardous driving conditions or situations. Let the person you are speaking with know you are driving; if necessary, suspend the call in heavy traffic or hazardous weather conditions. Rain, sleet, snow and ice can be hazardous, but so is heavy traffic. As a driver, your first responsibility is to pay attention to the road.
5. Do not take notes or look up device numbers while driving. If you are reading an address book or business card, or writing a "to-do" list while driving a car, you are not watching where you are going. It is common sense. Don't get caught in a dangerous situation because you are reading or writing and not paying attention to the road or nearby vehicles.
6. Dial sensibly and assess the traffic; if possible, place calls when you are not moving or before pulling into traffic. Try to plan your calls before you begin your trip or attempt to coincide your calls with times you may be stopped at a stop sign, red light or otherwise stationary. But if you need to dial while driving, follow this simple tip – dial only a few numbers, check the road and your mirrors, then continue.

7. Do not engage in stressful or emotional conversations that may be distracting. Stressful or emotional conversations and driving do not mix; they are distracting and even dangerous when you are behind the wheel of a car. Make people you are talking with aware you are driving and if necessary, suspend conversations which have the potential to divert your attention from the road.
8. Use your wireless device to call for help. Your wireless device is one of the greatest tools you can own to protect yourself and your family in dangerous situations – with your device at your side, help is only three numbers away. Dial 911 or other local emergency numbers in the case of fire, traffic accident, road hazard or medical emergency. Remember, it is a free call on your wireless device!
9. Use your wireless device to help others in emergencies. Your wireless device provides you a perfect opportunity to be a "Good Samaritan" in your community. If you see an auto accident, crime in progress or other serious emergency where lives are in danger, call 911 or other local emergency numbers, as you would want others to do for you.
10. Call roadside assistance or a special wireless non-emergency assistance number when necessary. Certain situations you encounter while driving may require attention, but are not urgent enough to merit a call for emergency services. But you can still use your wireless device to lend a hand. If you see a broken-down vehicle posing no serious hazard, a broken traffic signal, a minor traffic accident where no one appears injured or a vehicle you know to be stolen, call roadside assistance or other special non-emergency wireless numbers.

For more information, please call 888-901-SAFE.

Safety Guidelines

Consumer Information on SAR (Specific Absorption Rate)

This device model meets the government's requirements for exposure to radio waves.

Your wireless device is a radio transmitter and receiver. It is designed and manufactured not to exceed the emission limits for exposure to radiofrequency (RF) energy set by the Federal Communications Commission (FCC) of the U.S. Government. These limits are part of comprehensive guidelines and establish permitted levels of RF energy for the general population. The guidelines are based on standards that were developed by independent scientific organizations through periodic and thorough evaluation of scientific studies. The standards include a substantial safety margin designed to assure the safety of all persons, regardless of age and health.

The exposure standard for wireless mobile devices employs a unit of measurement known as the Specific Absorption Rate, or SAR. The SAR limit set by the FCC is 1.6 W/kg.

* Tests for SAR are conducted using standard operating positions specified by the FCC with the device transmitting at its highest certified power level in all tested frequency bands.

Although SAR is determined at the highest certified power level, the actual SAR level of the device while operating can be well below the maximum value. Because the device is designed to operate at multiple power levels to use only the power required to reach the network, in general, the closer you are to a wireless base station antenna, the lower the power output.

Before a device model is available for sale to the public, it must be tested and certified to the FCC that it does not exceed the limit established by the government adopted requirement for safe exposure. The tests are performed in positions and locations (e.g., at the ear and worn on the body) as required by the FCC for each model.

While there may be differences between SAR levels of various devices and at various positions, they all meet the government requirement for safe exposure.

The FCC has granted an Equipment Authorization for this model device with all reported SAR levels evaluated as in compliance with the FCC RF emission guidelines. SAR information on this model device is on file with the FCC and can be found under the Display Grant section of <http://www.fcc.gov/oet/ea/fccid> after searching on FCC ID: ZNFK300UM.

Additionally, the highest SAR values can also be found on the LG website: <https://www.lg.com/global/support/sar/sar>. Additional information on Specific Absorption Rates (SAR) can be found on the Cellular Telecommunications Industry Association (CTIA) website at <http://www.ctia.org/>.

* In the United States and Canada, the SAR limit for mobile devices used by the public is 1.6 watts/kg (W/kg) averaged over one gram of tissue. The standard incorporates a substantial margin of safety to give additional protection for the public and to account for any variations in measurements.

* Product meets current FCC & ISED Radio Frequency Exposure Guidelines.

FCC ID: ZNFK300UM

IC: 2703C-K300WM

Precautions when using SIM cards

- Do not insert the SIM card into the device with the label or seal attached. This may cause damage.
- Do not remove the SIM card while using the device. This may damage the SIM card or the system.
- Take extra care to ensure that the SIM card is not scratched, bent, or damaged by magnets. This may delete files saved on the SIM card or cause device malfunctions.

Precautions when using memory cards

- Make sure that the orientation is correct when inserting the memory card. Inserting using the wrong orientation may damage the card.

Safety Guidelines

Laser Safety Statement

FDA Notice

Complies with 21 CFR 1040.10 and 1040.11 except for deviations pursuant to Laser Notice No. 50, dated June 24, 2007

Caution!

This product employs a Laser system. To ensure proper use of this product, please read this owner's manual carefully and retain for future reference. Should the unit require maintenance, contact an authorised service centre.

Use of controls, adjustments, or the performance of procedures other than those specified herein may result in hazardous radiation exposure.

To prevent direct exposure to laser beam, do not try to open the enclosure or make direct contact with the laser.

| | |
|----------|---------------|
| CLASS 1 | LASER PRODUCT |
| KLASSE 1 | LASER PRODUKT |
| LUOKAN 1 | LASER LAITE |
| KLASS 1 | LASER APPARAT |
| CLASSE 1 | PRODUIT LASER |

Trademarks

- **Bluetooth®** is a registered trademark of Bluetooth SIG, Inc. worldwide.
- **Wi-Fi®** and the Wi-Fi logo are registered trademarks of the Wi-Fi Alliance.
- Copyright ©2020 LG Electronics Inc. All rights reserved. LG and the LG logo are registered trademarks of LG Group and its related entities.
- Google is a trademark of Google LLC.
- Covered by one or more claims of the patents listed at patentlist.hevcadvance.com.

WARNING! Notice for Battery Replacement

- Li-Ion Battery is a hazardous component which can cause injury.
- Battery replacement by a non-qualified professional can cause damage to your device.
- Your device has an internal battery. For your safety, do not remove the back cover. If you need to replace the battery, take it to the nearest authorized LG Electronics service point or dealer for assistance.

Open Source Software Notice Information

To obtain the source code under GPL, LGPL, MPL, and other open source licences, that is contained in this product, please visit <http://opensource.lge.com>.

In addition to the source code, all referred licence terms, warranty disclaimers and copyright notices are available for download.

LG Electronics will also provide open source code to you on CD-ROM for a charge covering the cost of performing such distribution (such as the cost of media, shipping, and handling) upon email request to opensource@lge.com.

This offer is valid for a period of three years after our last shipment of this product. This offer is valid to anyone in receipt of this information.

Safety Guidelines

Regulatory information (FCC/IC ID number, etc.)

For regulatory details, go to **Settings > System > Regulatory & safety**.

HOW TO UPDATE YOUR DEVICE

Access to latest firmware releases, new software functions and improvements.

- **Select the software update in settings menu on your device.**

Anti-Theft Guide

You can set up your device to prevent other people from using it if it's been reset to factory settings without your permission. For example, if your device is lost, stolen, or wiped, only someone with your Google account or screen lock information can use the device.

All you need to make sure your device is protected is:

- **Set a screen lock:** If your device is lost or stolen but you have a screen lock set, the device can't be erased using the Settings menu unless your screen is unlocked.
- **Add your Google account on your device:** If your device is wiped but you have your Google account on it, the device can't finish the setup process until your Google account information is entered again.

After your device is protected, you'll need to either unlock your screen or enter your Google account password if you need to do a factory reset. This ensures that you or someone you trust is doing the reset.



Do not forget the Google account and password you had added to your device prior to performing a factory reset. If you can't provide the account information during the setup process, you won't be able to use the device at all after performing the factory reset.

LIMITED WARRANTY STATEMENT

ARBITRATION NOTICE: THIS LIMITED WARRANTY CONTAINS AN ARBITRATION PROVISION THAT REQUIRES YOU AND LG TO RESOLVE DISPUTES BY BINDING ARBITRATION INSTEAD OF IN COURT, UNLESS THE LAWS OF YOUR PROVINCE OR TERRITORY DO NOT PERMIT THAT, OR, IN OTHER JURISDICTIONS, IF YOU CHOOSE TO OPT OUT. IN ARBITRATION, CLASS ACTIONS AND JURY TRIALS ARE NOT PERMITTED. PLEASE SEE THE SECTION TITLED "PROCEDURE FOR RESOLVING DISPUTES" BELOW.

Warranty Laws

In the United States, the following laws govern warranties that arise in retail sales of consumer goods:

- The California Song-Beverly Consumer Warranty Act [CC §§1790 et seq],
- The California Uniform Commercial Code, Division Two [Com C §§2101 et seq], and
- The Magnuson-Moss Warranty Federal Trade Commission Improvement Act [15 USC §§2301 et seq; 16 CFR Parts 701– 703]. A typical Magnuson-Moss Act warranty is a written promise that the product is free of defects or a written promise to refund, repair, or replace defective goods. [See 15 USC §2301(6).] Remedies include damages for failing to honor a written warranty or service contract or for violating disclosure provisions. [See 15 USC §2310(d).] Except for some labeling and disclosure requirements, the federal Act does not preempt state law. [See 15 USC §2311.]

In Canada, the consumer protection, business practices and/or sale of goods laws of your provincial jurisdiction of residence govern warranties that arise in retail sales of consumer goods. In addition, the Canadian Consumer Product Safety Act applies to product safety.

1. WHAT THIS WARRANTY COVERS:

LG offers you a limited warranty that the enclosed subscriber unit and its enclosed accessories will be free from defects in material and workmanship, according to the following terms and conditions:

1. The limited warranty for the product extends for ONE (1) year beginning on the date of purchase of the product by the original end user.
2. The limited warranty extends only to the original end user of the product and is not assignable or transferable to any subsequent purchaser/end user.
3. This warranty is good only to the original end user of the product during the warranty period as long as it is in Canada.
4. Upon request from LG, the consumer must provide information to reasonably prove the date of purchase.
5. During the applicable warranty period, LG will repair or replace at LG's discretion, without charge to the original end user, any defective component part of the device or accessory.
6. LG may use rebuilt, reconditioned or new parts or components when repairing any product or replace a product with a rebuilt, reconditioned or new product.

2. WHAT THIS WARRANTY DOES NOT COVER:

1. Defects or damages resulting from use of the product in other than its normal and customary manner.
2. Defects or damages from abnormal use, abnormal conditions, improper storage, exposure to moisture or dampness, unauthorized modifications, unauthorized connections, unauthorized repair, misuse, neglect, abuse, accident, alteration, improper installation or other acts which are not the fault of LG, including damage caused by spills of food or liquids.
3. Breakage or damage to antennas unless caused directly by defects in material or workmanship.

4. The fact that the Customer Service Department at LG was not notified by the original end user of the alleged defect or malfunction of the product, during the warranty period.
5. Products which have had their serial numbers removed or made illegible.
6. Damage resulting from use of non-LG approved accessories.
7. All plastic surfaces and all other externally exposed parts that are scratched or damaged due to normal customer use.
8. Products serviced by non-authorized persons or companies.

Notes:

1. This limited warranty supersedes all other warranties, expressed or implied either in fact or by operations of law, statutory or otherwise, including, but not limited to any implied warranty of merchantability or fitness for a particular purpose.
2. Shipping damage is the sole responsibility of the shipping company.

3. EXCLUSION OF LIABILITY:

No other express warranty is applicable to this product. THE DURATION OF ANY IMPLIED WARRANTIES, INCLUDING THE IMPLIED WARRANTY OF MARKETABILITY, IS LIMITED TO THE DURATION OF THE EXPRESS WARRANTY HEREIN. LG ELECTRONICS CANADA, INC. SHALL NOT BE LIABLE FOR THE LOSS OF THE USE OF THE PRODUCT, INCONVENIENCE, LOSS OR ANY OTHER DAMAGES, DIRECT OR CONSEQUENTIAL, ARISING OUT OF THE USE OF, OR INABILITY TO USE, THIS PRODUCT OR FOR ANY BREACH OF ANY EXPRESS OR IMPLIED WARRANTY, INCLUDING THE IMPLIED WARRANTY OF MARKETABILITY APPLICABLE TO THIS PRODUCT.

4. PROVINCIAL/TERRITORIAL LAW RIGHTS:

No other express warranty is applicable to this product. THE DURATION OF ANY IMPLIED WARRANTIES OR CONDITIONS, INCLUDING THE IMPLIED WARRANTY OR CONDITION OF MARKETABILITY OR MERCHANTABILITY OR FITNESS FOR A PARTICULAR PURPOSE, IS LIMITED TO THE DURATION OF THE EXPRESS WARRANTY HEREIN. LG SHALL NOT BE LIABLE FOR THE LOSS OF THE USE OF THE PRODUCT, INCONVENIENCE, LOSS OR ANY OTHER DAMAGES, DIRECT, INDIRECT OR CONSEQUENTIAL, ARISING OUT OF THE USE OF, OR INABILITY TO USE, THIS PRODUCT OR FOR ANY BREACH OF ANY EXPRESS OR IMPLIED WARRANTY OR CONDITION, INCLUDING THE IMPLIED WARRANTY OR CONDITION OF MARKETABILITY OR MERCHANTABILITY OR FITNESS FOR A PARTICULAR PURPOSE APPLICABLE TO THIS PRODUCT.

Some provinces or territories do not allow the exclusive limitation of incidental or consequential damages or limitations on how long an implied warranty lasts; so these limitations or exclusions may not apply to you. This warranty gives you specific legal rights and you may also have other rights which vary amongst provinces and territories.

5. HOW TO GET WARRANTY SERVICE:

To obtain warranty service, please call or fax to the following telephone number from anywhere in Canada: 1-888-542-2623

Otherwise, you may visit http://www.lg.com/ca_en/support.

Correspondence may also be mailed to the following address: LG Electronics Service- Mobile Handsets, 20 Norelco Drive, North York, Ontario M9L 2X6

DO NOT RETURN YOUR PRODUCT TO THE ABOVE ADDRESS. Please call or write for the location of the authorized LG service centre nearest you and for the procedures for obtaining warranty claims.

PROCEDURE FOR RESOLVING DISPUTES:

EXCEPT WHERE PROHIBITED BY LAW, ALL DISPUTES BETWEEN YOU AND LG ARISING OUT OF OR RELATING IN ANY WAY TO THIS LIMITED WARRANTY OR THE PRODUCT SHALL BE RESOLVED EXCLUSIVELY THROUGH BINDING ARBITRATION, AND NOT IN A COURT OF GENERAL JURISDICTION. EXCEPT WHERE PROHIBITED BY LAW, YOU AND LG BOTH IRREVOCABLY AGREE TO WAIVE THE RIGHT TO A JURY TRIAL AND TO BRING OR PARTICIPATE IN A CLASS ACTION.

Definitions. For the purposes of this section, references to "LG" mean LG Electronics Canada, Inc., its parents, subsidiaries and affiliates, and each of their officers, directors, employees, agents, beneficiaries, predecessors in interest, successors, assigns and suppliers; references to "dispute" or "claim" shall include any dispute, claim or controversy of any kind whatsoever (whether based in contract, tort, statute, regulation, ordinance, fraud, misrepresentation or any other legal or equitable theory) arising out of or relating in any way to the sale, condition or performance of the product or this Limited Warranty.

Notice of Dispute. In the event you intend to commence an arbitration proceeding, you must first notify LG in writing at least 30 days in advance of initiating the arbitration by sending a letter to LGECI Legal Team at 20 Norelco Drive, North York, Ontario, Canada M9L 2X6 (the "Notice of Dispute"). You and LG agree to engage in good faith discussions in an attempt to amicably resolve your claim. The notice must provide your name, address, and telephone number; identify the product that is the subject of the claim; and describe the nature of the claim and the relief being sought. If you and LG are unable to resolve the dispute within 30 days of LG's receipt of the Notice of Dispute, the dispute shall be resolved by binding arbitration in accordance with the procedure set out herein. You and LG both agree that, during the arbitration proceeding, the terms (including any amount) of any settlement offer made by either you or LG will not be disclosed to the arbitrator until the arbitrator determines the dispute.

Agreement to Binding Arbitration and Class Action Waiver.

Upon failure to resolve the dispute during the 30 day period after LG's receipt of the Notice of Dispute, you and LG agree to resolve any claims between you and LG only by binding arbitration on an individual basis, unless you opt out as provided below, or you reside in a jurisdiction that prevents full application of this clause in the circumstances of the claims at issue (in which case if you are a consumer, this clause will only apply if you expressly agree to the arbitration). To the extent permitted by applicable law, any dispute between you and LG shall not be combined or consolidated with a dispute involving any other person's or entity's product or claim. More specifically, without limitation of the foregoing, except to the extent such a prohibition is not permitted by law, any dispute between you and LG shall not under any circumstances proceed as part of a class or representative action. Instead of arbitration, either party may bring an individual action in small claims court, but that small claims court action may not be brought on a class or representative basis except to the extent this prohibition is not permitted by law in your province or territory of jurisdiction as it relates to the claims at issue between you and LG.

Arbitration Rules and Procedures. To begin arbitration of a claim, either you or LG must make a written demand for arbitration. The arbitration will be private and confidential, and conducted on a simplified and expedited basis before a single arbitrator chosen by the parties under the provincial or territorial commercial arbitration law and rules of the province or territory of your residence. You must also send a copy of your written demand to LG at LG Electronics, Canada, Inc., Attn: Legal Department-Arbitration, 20 Norelco Drive, North York, Ontario M9L 2X6. This arbitration provision is governed by your applicable provincial or territorial commercial arbitration legislation. Judgment may be entered on the arbitrator's award in any court of competent jurisdiction. All issues are for the arbitrator to decide, except that, issues relating to the scope and enforceability of the arbitration provision and to the arbitrability of the dispute are for the court to decide. The arbitrator is bound by the terms of this provision.

Governing Law. The law of the province or territory of your purchase shall govern this Limited Warranty and any disputes between you and LG except to the extent that such law is preempted by or inconsistent with applicable federal or provincial/territorial law. Should arbitration not be permitted for any claim, action, dispute or controversy between you and LG, you and LG attorn to the exclusive jurisdiction of the courts of the province or territory of your purchase for the resolution of the claim, action, dispute or controversy between you and LG.

Fees/Costs. You do not need to pay any fee to begin an arbitration. Upon receipt of your written demand for arbitration, LG will promptly pay all arbitration filing fees unless you seek more than \$25,000 in damages, in which case the payment of these fees will be governed by the applicable arbitration rules. Except as otherwise provided for herein, LG will pay all filing, administration and arbitrator fees for any arbitration initiated in accordance with the applicable arbitration rules and this arbitration provision. If you prevail in the arbitration, LG will pay your attorneys' fees and expenses as long as they are reasonable, by considering factors including, but not limited to, the purchase amount and claim amount. Notwithstanding the foregoing, if applicable law allows for an award of reasonable attorneys' fees and expenses, an arbitrator can award them to the same extent that a court would. If the arbitrator finds either the substance of your claim or the relief sought in the demand is frivolous or brought for an improper purpose (as measured by the applicable laws), then the payment of all arbitration fees will be governed by the applicable arbitration rules. In such a situation, you agree to reimburse LG for all monies previously disbursed by it that are otherwise your obligation to pay under the applicable arbitration rules. Except as otherwise provided for, LG waives any rights it may have to seek attorneys' fees and expenses from you if LG prevails in the arbitration.

Hearings and Location. If your claim is for \$25,000 or less, you may choose to have the arbitration conducted solely (1) on the basis of documents submitted to the arbitrator, (2) through a telephonic hearing, or (3) by an in-person hearing as established by the applicable arbitration rules.

If your claim exceeds \$25,000, the right to a hearing will be determined by the applicable arbitration rules. Any in-person arbitration hearings will be held at the nearest, most mutually-convenient arbitration location available within the province or territory in which you reside unless you and LG both agree to another location or agree to a telephonic arbitration.

Severability and Waiver. If any portion of this Limited Warranty (including these arbitration procedures) is unenforceable, the remaining provisions will continue in full force and effect to the maximum extent permitted by applicable law. Should LG fail to enforce strict performance of any provision of this Limited Warranty (including these arbitration procedures), it does not mean that LG intends to waive or has waived any provision or part of this Limited Warranty.

Opt Out. You may opt out of this dispute resolution procedure. If you opt out, neither you nor LG can require the other to participate in an arbitration proceeding. To opt out, you must send notice to LG no later than 30 calendar days from the date of the first consumer purchaser's purchase of the product by either (i) sending an e-mail to optout@lge.com, with the subject line: "Arbitration Opt Out;" or (ii) calling 1-800-980-2973. You must include in the opt out e-mail or provide by telephone: (a) your name and address; (b) the date on which the product was purchased; (c) the product model name or model number; and (d) the IMEI or MEID or Serial Number, as applicable (the IMEI or MEID or Serial Number can be found (i) on the product box; (ii) on a label on the back of the product beneath the battery, if the battery is removable; or (iii) from the settings menu via the following path: **Settings > System > About phone > Status**).

In the event that you "Opt Out", the law of the province or territory of your residence shall govern this Limited Warranty and any disputes between you and LG except to the extent that such law is preempted by or inconsistent with applicable federal or provincial/territorial law. Should arbitration not be permitted for any claim, action, dispute or controversy between you and LG, you and LG agree to attorn to the

exclusive jurisdiction of the courts of the province or territory of your residence for the resolution of the claim, action, dispute or controversy between you and LG.

You may only opt out of the dispute resolution procedure in the manner described above (that is, by e-mail or telephone); no other form of notice will be effective to opt out of this dispute resolution procedure. Opting out of this dispute resolution procedure will not affect the coverage of the Limited Warranty in any way, and you will continue to enjoy the full benefits of the Limited Warranty. If you keep this product and do not opt out, then you accept all terms and conditions of the arbitration provision described above.

Conflict of Terms. In the event of a conflict or inconsistency between the terms of this Limited Warranty and the End User Licence Agreement ("EULA") in regards to dispute resolution, the terms of this Limited Warranty shall control and govern the rights and obligations of the parties and shall take precedence over the EULA.



LG

Life's Good

**Electronics Canada Inc.
North York ON M9L 2X6**