



ENGLISH

FRANÇAIS

# USER GUIDE

# LM-X320WM

Copyright ©2019 LG Electronics Inc. All rights reserved.



MFL71466501 (1.0)

[www.lg.com](http://www.lg.com)

# About this user guide

Thank you for choosing this LG product. Please carefully read this user guide before using the device for the first time to ensure safe and proper use.

- Always use genuine LG accessories. The supplied items are designed only for this device and may not be compatible with other devices.
- Descriptions are based on the device default settings.
- Default apps on the device are subject to updates, and support for these apps may be withdrawn without prior notice. If you have any questions about an app provided with the device, please contact an LG Service Centre. For user-installed apps, please contact the relevant service provider.
- Modifying the device's operating system or installing software from unofficial sources may damage the device and lead to data corruption or data loss. Such actions will violate your LG licence agreement and void your warranty.
- Some content and illustrations may differ from your device, depending on the area, service provider, software version, or OS version, and are subject to change without prior notice.
- Software, audio, wallpaper, images, and other media supplied with your device are licensed for limited use. If you extract and use these materials for commercial or other purposes, you may be infringing copyright laws. As a user, you are fully responsible for the illegal use of media.
- Additional charges may incur for data services, such as messaging, uploading, downloading, auto-syncing and location services. To void additional charges, select a data plan suitable to your needs. Contact your service provider to obtain additional details.

## Instructional notices



**WARNING:** Situations that could cause injury to the user and third parties.



**CAUTION:** Situations that may cause minor injury or damage to the device.



**NOTE:** Notices or additional information.

# Table of contents

## 01

### Custom-designed Features

- 6 Camera features
- 7 Gallery features
- 11 Google Assistant
- 12 Multi-tasking feature

## 02

### Basic Functions

- 15 Product components and accessories
- 16 Parts overview
- 19 Turning the power on or off
- 20 Installing the SIM card
- 22 Inserting the memory card
- 23 Removing the memory card
- 23 Battery
- 25 Touch screen
- 29 Home screen
- 38 Screen lock

- 43 Memory card encryption
- 44 Taking screenshots
- 45 Entering text
- 50 Do not disturb

## 03

### Useful Apps

- 52 Installing and uninstalling apps
- 53 App trash
- 54 App Shortcuts
- 55 Phone
- 59 Messaging
- 60 Camera
- 69 Gallery
- 73 Contacts
- 76 QuickMemo+
- 78 Clock
- 79 Calendar
- 80 Tasks
- 80 Music
- 81 Calculator
- 81 Game Launcher
- 82 E-mail
- 82 Audio Recorder

- 83 FM Radio
- 83 Update centre
- 83 File Manager
- 83 Smart cleaning
- 84 LG Mobile Switch
- 84 APP trash
- 85 SmartWorld
- 85 RemoteCall Service
- 86 Google apps

## 04

### Settings

- 90 Settings
- 90 Network
- 100 Sound
- 101 Display
- 102 General

## 05

### Appendix

- 113 LG Language Settings
- 113 LG Bridge
- 114 Phone software update
- 116 Anti-Theft Guide
- 117 Open Source Software Notice Information
- 117 Regulatory information(FCC/IC ID number, etc.)
- 118 Trademarks
- 118 More information
- 120 FAQ

## 06

### For Your Safety

## 07

### LIMITED WARRANTY

- 149 LIMITED WARRANTY STATEMENT



01

## **Custom-designed Features**

# Camera features

## Flash Jump-Cut

Photos taken at a regular interval are saved as GIF files.

- 1 Tap > , then tap **MODE** > .
- 2 Tap to take a photo.
  - Photos are taken every 3 seconds and saved as a GIF file.
  - Tap on the screen to select the number of photos you want to take.
  - While taking photos, tap to create GIF files with previously taken photos.



- The flash automatically turns on to act as a timer.
- The shots taken this time and the total number of shots are displayed at the bottom of the screen.
- All taken photos are saved as GIF files only.
- You may not change the GIF speed nor image order.

# Gallery features

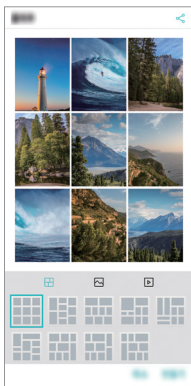
## Making a collage

You can make a collage from the associated content.

- 1 While viewing an album, tap **:** > **Make collage**.
- 2 Select the desired images to add to the a collage and then tap **NEXT**.
  - Select the desired layout from the bottom of the screen.
- 3 Tap **MAKE**.






- A maximum of 9 images can be used to create a collage.





## Creating a movie

You can create a new movie by putting images and videos together.

1 Tap  >  > **Photos** tab, then tap  > **Create movie**.


You can also tap  >  > **Play** tab, then tap **Create movie**.

2 Select images or videos for your movie and tap **NEXT**.


3 Edit the selected images and videos and then tap **SAVE**.



## Deleting files

You can select images or videos to delete from your video by tapping  at its thumbnail.

## Adding files

You can select images or videos to add after tapping  at the bottom of the screen. You can also select the images or videos you have already previously added.



- Touch and hold a file, and then tap another file for multiple selection.

## Rearranging files

To rearrange the images and videos, touch and hold the file you want to move, then dragging it to the desired location.


## Adding file effects

Tap  to add a theme or background music, change the font.

## Resetting the movie edits

You can reset the edits made to the movie (e.g. play time) by tapping .

## Previewing a file

Check your new video before saving it by tapping . After the playback time elapses, the next file is played automatically.




- A maximum of 50 images and videos can be used to create a video.
- The playback time for an image is 3 seconds by default and it cannot be changed. Videos can be trimmed down to a minimum of 1 second.
- This feature may not support some image or video formats.



# Making a GIF

You can easily make a GIF file using recorded videos or photos.

## Making a GIF by using recorded videos

- 1 At the desired starting point while watching a video, tap .
- 2 Select the length of the GIF you want to create.
  - GIF is generated for the time selected from the current time.
  - For videos less than 5 seconds, GIF images are automatically generated for the remaining time.

## Making a GIF by using photos


- 1 While viewing an album, tap  > **Create GIF**.  
You can also tap  on **Play** on the Play tab of the Gallery app.
- 2 Select the desired photos to create a GIF file and then tap **NEXT**.
  - You can add more images and adjust the GIF speed, screen ratio, and file order.



- You may use this feature solely for creative purposes. The use of this feature involving infringement of any other person's rights, such as copyright or defamatory or offensive statements, may be subject to civil, criminal, or administrative liabilities and/or penalties under applicable laws. You shall not copy, reproduce, distribute, or otherwise make illegal use of any copyrighted materials without permission of the rightful owner or copyright holder. To the fullest extent permitted by applicable law, LG Electronics disclaims all expressed and implied warranties as well as liabilities associated thereto.
- A maximum of 100 images can be used to create a GIF file.

# Google Assistant


## Google Assistant overview

Your device has the built-in Google Assistant feature. Find answers and get things done while on-the-go. To get started, just press the Google Assistant key on the side of the device or touch and hold .



- To use this feature, first connect to the network and sign in to your Google Account.

## Sign in



- 1 Touch and hold  from the Home screen to launch **Google Assistant** or press the Google Assistant key on the left side of the device.
- 2 Tap **GET STARTED**.
- 3 Follow the on-screen instructions and say **"Ok Google"**.
  - The device saves your voice data for recognition.
- 4 Select whether to use the voice recognition unlock feature.
  - When this feature is activated, you can unlock the screen by saying **"Ok Google"** while the screen is turned off or unlocked.



- This feature may be more vulnerable to security than the other screen locks, such as Knock Code, Pattern, PIN, and Password.  
When a similar voice or your recorded voice is used, the screen may be unlocked.
- You need to unlock the device by using the specified method if you fail to unlock the device with voice recognition. See [Setting a screen lock](#) for details.

- 5 Tap **Save**.

# Launching Google Assistant

- 1 You can launch the Google Assistant by using one of the following methods:
  - Touch and hold  on the Home screen.
  - Press the Google Assistant key on the left side of the device.
  - Say “Ok Google” when the screen is turned off or locked.
- 2 Say a command or question when you see  on the bottom of the screen.





- Voice recognition accuracy may decrease if you speak with an unclear voice or in a noisy place. When you use the voice recognition feature, increase its accuracy by speaking with a clear voice in a quiet place.



## Multi-tasking feature

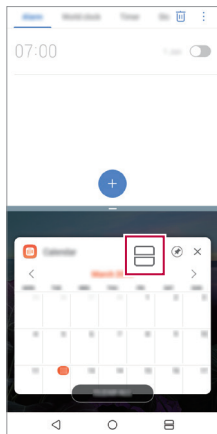
### Multi window


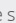
You can use two apps at the same time by separating the screen into the multiple windows.

- 1 Tap  from the Home touch buttons.
  - Recently-used apps appear.
- 2 Tap  at the top of the desired app to use the Multi window feature.
  - The selected app appears at the top half of the screen.

Alternatively,


- 1 Touch and hold  while using an app.
  - Recently-used apps appear on the split screen.
- 2 Tap  at the top of the desired app to use the Multi window feature.
  - The selected app appears at the bottom half of the screen.




- To deactivate the Multi window feature, touch and hold  on the Home touch button.
- To adjust the size of the split screen, drag  at the centre of the screen.
- The Multi window feature is not supported by some LG apps and the apps downloaded from the Play Store.

## Overview screen

The Overview screen provides a preview of your recently used apps.

To view the list of recently used apps, tap  on the Home, then tap the displayed app.

- Touch and hold an app and drag it to the top of the screen to start the app with the Multi window feature. You can also tap  at the top of each app.



02

## **Basic Functions**

# Product components and accessories

The following items are included with your device.

- Device
- USB cable
- Charger
- Quick Start Guide
- Ejection pin



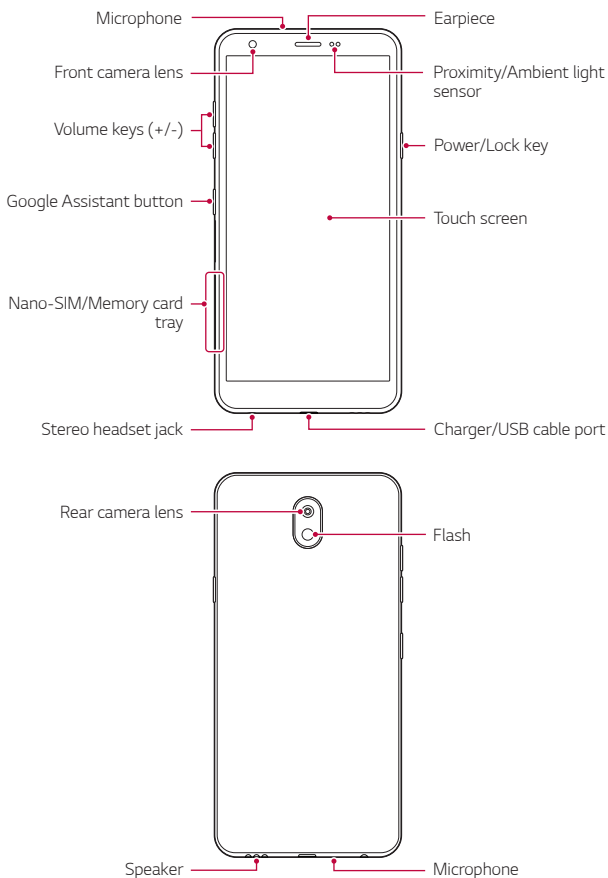
- The items described above may be optional.
- The items supplied with the device and any available accessories may vary depending on the area and service provider.
- Always use genuine LG Electronics accessories. Using accessories made by other manufacturers may affect your device's call performance or cause malfunctions. This may not be covered by LG's repair service.
- Some of the device parts are made of tempered glass. If you drop your device on a hard surface or subject it to severe impact, the tempered glass may be damaged. If this happens, stop using your device immediately and contact an LG Customer Service Centre.



- If any of these basic items are missing, contact the dealer from which you purchased your device.
- To purchase additional items, contact an LG Customer Service Centre.
- Some items in the product box are subject to change without notice.
- The appearance and specifications of your device are subject to change without notice.
- Device specifications may vary depending on the area or service provider.



# Parts overview





**Do NOT attempt to remove the back cover by yourself.**

Doing so may severely damage the battery and device, which could cause overheating, fire, and injury. This device's back cover and battery are not to be removed or replaced by a non-qualified professional.

- Proximity/Ambient light sensor
  - Proximity sensor: During a call, the proximity sensor turns off the screen and disables touch functionality when the device is in close proximity to the human body. It turns the screen back on and enables touch functionality when the device is outside a specific range.
  - Ambient light sensor: The ambient light sensor analyzes the ambient light intensity when the auto-brightness control mode is turned on.
- Volume keys
  - Adjust the volume for ringtones, calls or notifications.
  - While using the Camera, gently press a Volume key to take a photo. To take continuous photos, press and hold the Volume key.
  - Press the Volume Down (-) key twice to launch the Camera app when the screen is locked or turned off. Press the Volume Up (+) key twice to launch Capture+.
- Power/Lock key
  - Briefly press the key when you want to turn the screen on or off.
  - Press and hold the key when you want to select a power control option.
- Google Assistant button
  - Your device has the Google Assistant built-in. Find answers and get things done while on-the-go. To get started, just tap the Google Assistant button on the side of the phone.
  - Activate Google Assistant. See the *Google Assistant* for details.

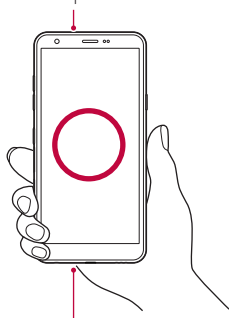


- Some functions may be restricted for access, depending on the device specifications.
- Do not put heavy objects on the device or sit on it. Failure to do so may damage the touch screen.
- Screen-protective film or accessories may interfere with the proximity sensor.
- If your device is wet or is being used in a humid place, the touch screen or buttons may not function properly.

Hold the device correctly as shown below. If you cover the microphone hole with a hand, finger, or protective case while using the device, you may sound unclear during a call.

### Good example

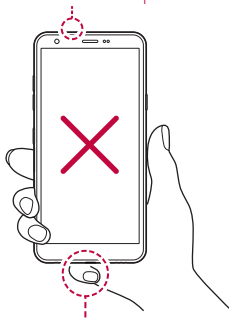
Microphone



Microphone

### Bad example

Do not cover the microphone.



Do not cover the microphone.

# Turning the power on or off

## Turning the power on

When the power is turned off, press and hold the Power/Lock key.



- When the device is turned on for the first time, initial configuration takes place. The first booting time for the smart phone may be longer than usual.

## Turning the power off

Press and hold the Power/Lock key, then select Power off.

## Restarting the device

When the device is not working properly or does not respond, restart it by following the instructions below.

- 1 Press and hold the Power/Lock key and the Volume Down (-) key at the same time until the power is turned off.
- 2 When the device is restarted, release the key.

## Power control options

Press and hold the Power/Lock key, then select an option.

- **Power off:** Turn the device off.
- **Power off and restart:** Restart the device.
- **Turn on Airplane mode:** Block telecommunication-related functions, including making phone calls, messaging and browsing the Internet. Other functions remain available.

# Installing the SIM card

Insert the SIM card provided by your mobile service provider to start using your device.

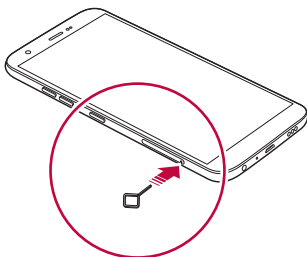


- Be careful with the ejection pin since it has a sharp edge.

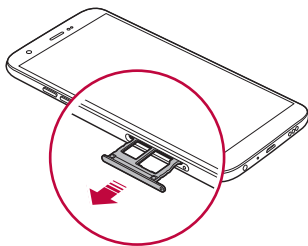


- In order for the water-resistant and dust-resistant features to work effectively, the card tray must be inserted correctly.

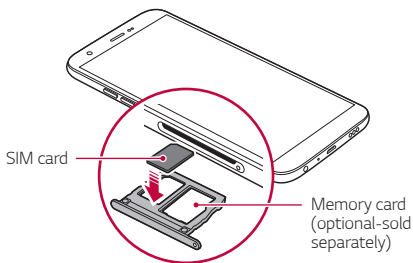
- 1 Insert the ejection pin into the hole on the card tray.



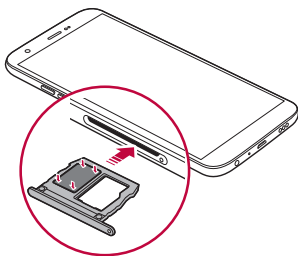
- 2 Pull out the card tray.



- 3 Put the SIM card on the card tray with the gold-coloured contacts facing downwards.



- 4 Insert the card tray back into the slot.



- This device supports only Nano SIM cards.
- For problem-free performance, it is recommended to use the device with the correct type of SIM card.
- If you insert the card tray into your device while the card tray is wet, your device may be damaged. Always make sure the card tray is dry.

## Precautions when using the SIM card

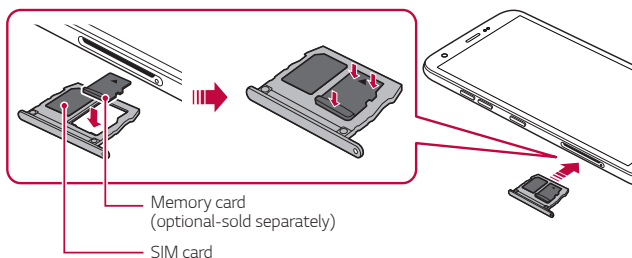
- Do not lose your SIM card. LG is not responsible for damage and other issues caused by loss or transfer of a SIM card.
- Be careful not to damage the SIM card when you insert or remove it.

# Inserting the memory card

Insert the memory card into your device.

Depending on the memory card manufacturer and type, some memory card may not be compatible with your device.

- 1 Insert the ejection pin into the hole on the card tray.
- 2 Pull out the card tray.
- 3 Put the memory card on the card tray with the gold-coloured contacts facing downwards.



- 4 Insert the card tray back into the slot.





- Some memory cards may not be fully compatible with the device. If you use an incompatible card, it may damage the device or the memory card, or corrupt the data stored in it.



- Frequent writing and erasing of data may shorten the memory card lifespan.

# Removing the memory card

Unmount the memory card before removing it for safety.

- 1 Tap  > **Settings** > **General** > **Storage** > .
- 2 Insert the ejection pin into the hole in the card tray and then pull out the card tray from the device.
- 3 Remove the memory card from the card tray.
- 4 Insert the card tray back into the slot.

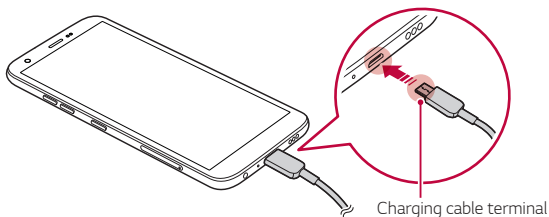


- Do not remove the memory card while the device is transferring or accessing information. This may cause data to be lost or corrupted, or may damage the memory card or the device. LG is not responsible for losses that result from the abuse or improper use of memory cards, including the loss of data.

## Battery

### Charging the battery

Before using the device, fully charge the battery.







- Do not use the external terminal, charging cable or gender for the device in presence of moisture. This may cause fire, electric shock, injury, or device malfunction. If there is moisture, stop using the device immediately and remove the moisture completely.
- Make sure to use the USB cable provided with your device.
- Make sure to use an LG-approved charger and charging cable. Charging the battery with a third-party charger may cause the battery to explode or may damage the device.
- Your device has an internal rechargeable battery. For your safety, do not remove the embedded battery.
- Using the device when it is charging may cause electric shock. To use the device, stop charging it.



- Remove the charger from the power socket after the device is fully charged. This prevents unnecessary power consumption.
- Another way to charge the battery is by connecting a USB cable between the device and a desktop or laptop computer. This may take a longer time than plugging the adapter to a wall outlet.
- Do not charge the battery by using a USB hub that is unable to maintain the rated voltage. Charging may fail or unintentionally stop.

## Precautions when using the device

- Make sure to use the USB cable provided; do not use third party USB cables or chargers with your device. The LG limited warranty does not cover the use of third party accessories.
- Failure to follow the instructions in this guide and improper use may damage the device.

## Using the battery efficiently

Battery lifespan may decrease if you keep many apps and functions running simultaneously and continuously.

Cancel background operations to increase battery life.

To minimize battery consumption, follow these tips:

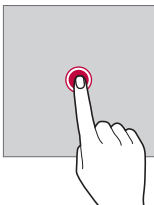
- Turn off the **Bluetooth®** or Wi-Fi network function when not using them.
- Set the screen timeout to as short a time as possible.
- Minimize the screen brightness.
- Set a screen lock when the device is not used.
- Check the battery level while using any downloaded apps.

## Touch screen

You can familiarize yourself with how to control your device by using touch screen gestures.

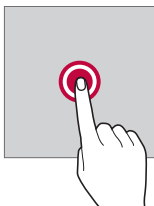
### Tapping

Lightly tap with your fingertip to select or run an app or option.



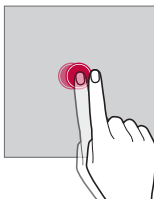
## Touching and holding

Touch and hold for several seconds to display a menu with available options.



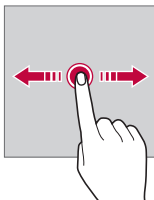
## Double-tapping

Tap twice quickly to zoom in or out on a web page or map.



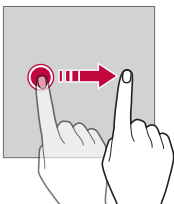
## Dragging

Touch and hold an item, such as an app or widget, then move your finger to another location in a controlled motion. You can use this gesture to move an item.



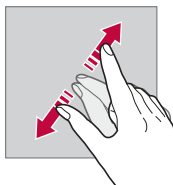
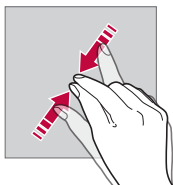
## Swiping

Touch the screen with your finger and move it quickly without pausing. You can use this gesture to scroll through a list, a web page, photos, screens, and more.



## Pinching and spreading

Pinch two fingers to zoom out such as on a photo or map. To zoom in, spread your fingers apart.




- Do not expose the touch screen to excessive physical shock. You might damage the touch sensor.



- A touch screen failure may occur if you use the device near a magnetic, metallic or conductive material.
- If you use the device under bright lights, such as direct sunlight, the screen may not be visible, depending on your position. Use the device in a shady location or a location with an ambient light that is not too bright and bright enough to read books.
- Do not press the screen with excessive force.
- Gently tap with your fingertip on the option you want.
- Touch control may not work properly if you tap while wearing a glove or by using the tip of your fingernail.
- Touch control may not work properly if the screen is moist or wet.
- The touch screen may not function properly if a screen-protective film or accessory purchased from a third party store is attached to the device.
- Displaying a static image for extended periods of time may result in after-images or screen burn-in. Turn off the screen or avoid displaying the same image for a long time when you do not use the device.

# Home screen

## Home screen overview

The Home screen is the starting point for accessing various functions and apps on your device. Tap  on any screen to directly go to the Home screen.

You can manage all apps and widgets on the Home screen. Swipe the screen left or right to view all installed apps at a glance.

## Home screen layout

You can view all apps and organize widgets and folders on the Home screen.



- The Home screen may differ depending on the manufacturer policy, user settings, software version or service provider.

- **Status bar:** View status icons, the time and the battery level.
- **Weather widget:** View the information of weather and time for a specific area.

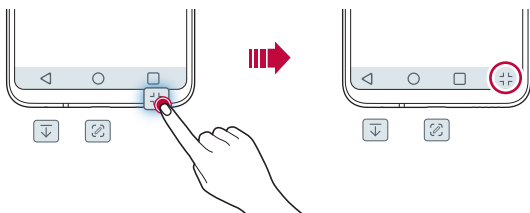
- **Google Search widget:** Type or speak to pull open Google Search.
- **Page icon:** Display the total number of Home screen canvases. You can tap the desired page icon to go to the page you selected. The icon reflecting the current canvas will be highlighted.
- **Quick access area:** Fix main apps at the bottom of the screen so that they can be accessed from any Home screen canvas.
- **Home touch buttons**
  - ◀: Return to the previous screen. Close the keypad or pop-up windows.
  - ○: Tap to go to the Home screen. To launch Google Assistant, touch and hold.
  - □: Tap to view a list of recently used apps or run an app from the list. To delete all the recently used apps, tap **CLEAR ALL**. To use two apps at the same time with the Multi window feature, touch and hold the button while using an app.

## Editing the Home touch buttons

You can rearrange the Home touch buttons or add frequently used functions to the Home touch buttons area.



Tap ○ > **Settings** > **Display** > **Home touch buttons** > **Button combination** and customize the settings.

- Several functions, including QSlide, Notification and Capture+, are provided.




## Hiding the Home touch buttons

You can hide the Home touch buttons to view in a larger screen while using an app.

- 1 Tap  > **Settings** > **Display** > **Home touch buttons** > **Hide Home touch buttons**.
- 2 Select apps to hide the Home touch buttons whiling using the app, and tap .
  - The Home touch buttons disappear 3 seconds after the last touch.
  - To view the Home touch buttons again, drag the bottom of the screen upwards.

## Lock/hide icon

The icon to lock or hide the Home touch buttons appears at the bottom left of the screen.

If you want to lock the Home touch buttons while hiding the buttons, tap  on the left of the Home touch buttons.

To hide the Home touch buttons again, double-tap .













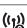



- Some features may not be supported while hiding the Home touch buttons.



## Status icons

When there is a notification for an unread message, calendar event or alarm, the status bar displays the corresponding notification icon. Check your device's status by viewing notification icons displayed on the status bar.

|   |  |
|---|--|
|  | No signal                                  |
|  | Data is being transmitted over the network |
|  | Alarm is set                               |
|  | Vibrate mode is on                         |
|  | Bluetooth is on                            |
|  | Connected to a computer via USB            |
|  | Battery level                              |
|  | Airplane mode is on                        |
|  | Missed calls                               |
|  | Wi-Fi is connected                         |
|  | Mute mode is on                            |
|  | GPS is on                                  |
|  | Hotspot is on                              |
|  | No SIM card                                |

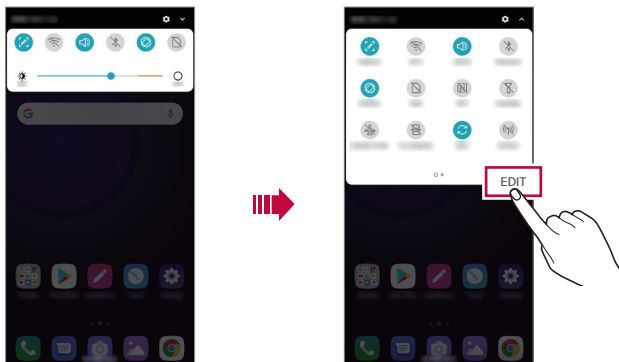


- Some of these icons may appear differently or may not appear at all, depending on the device's status. Refer to the icons according to the actual environment and area in which you are using the device and your service provider.
- Displayed icons may vary, depending on the area or service provider.

## Notifications panel

You can open the notifications panel by dragging the status bar downward on the main screen.

- To open the quick access icons list, drag the notifications panel downwards.
- To rearrange, add, or remove icons, tap **EDIT**.
- If you touch and hold the icon, the settings screen for the corresponding function appears.



- You can use the notifications panel even on the lock screen. Drag the notifications panel while the screen is locked to quickly access the desired features.

## Switching the screen orientation

You can set the screen orientation to automatically switch according to the device's physical orientation.

On the notification panel, tap **Rotation** from the quick access icon list.


You can also tap  > **Settings** > **Display** and activate **Auto-rotate screen**.




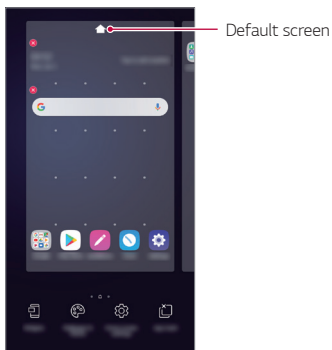
## Editing the Home screen

On the Home screen, touch and hold on an empty space, then select the desired action from below.

- To rearrange the Home screen canvases, touch and hold on a canvas, then drag it to another location.
- To add a widget to the Home screen, touch and hold on a blank area of the Home screen, then select **Widgets**.
- To change wallpapers, themes, and icons, touch and hold on a blank area of the Home screen, then select **Wallpaper & theme**.

You can also tap  > **Settings** > **Display** > **Wallpaper & theme**, then select wallpapers, themes, and icons, to apply to the device.


- To configure the Home screen settings, touch and hold on a blank area of the Home screen, then select **Home screen settings**. See *Home screen settings* for details.
- To view or reinstall the uninstalled apps, touch and hold on a blank area of the Home screen, then select **App trash**. See *App trash* for details.
- To change the default screen, touch and hold on a blank area of the Home screen, move to desired screen, tap , then tap the screen once more.

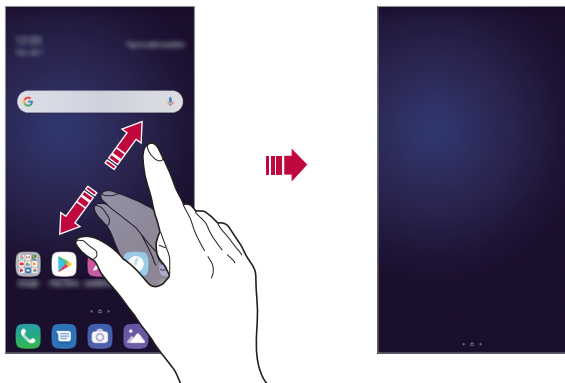


## Viewing the background theme

You can view only the background image by hiding the apps and widgets on the Home screen.

Spread two fingers apart on the Home screen.

- To return to the original screen, which displays apps and widgets, pinch your fingers on the Home screen or tap .



## Moving apps on the Home screen

On the Home screen, touch and hold an app, then drag it to another location.

- To keep frequently used apps at the bottom of the Home screen, touch and hold an app, then drag it to the quick access area at the bottom.
- To remove an icon from the quick access area, drag the icon to the Home screen.

# Using folders from the Home screen


## Creating folders

On the Home screen, touch and hold an app, then drag it over another app.

- A new folder is created and the apps are added to the folder.

## Editing folders

On the Home screen, tap a folder and do one of the following actions.


- To edit the folder name and colour, tap the folder name.
- To add apps, touch and hold an app, then drag it over the folder and release it.
- To remove an app from the folder, touch and hold the app and drag it to outside the folder. If the removed app is the only one app that existed in the folder, the folder is removed automatically.
- You can also add or remove apps after tapping  in the folder.



- You cannot change the folder colour while using downloaded theme.

## Home screen settings

You can customize the Home screen settings.

- 1 Tap  > **Settings** > **Display** > **Home screen**.
- 2 Customize the following settings:
  - **Select Home:** Select a Home screen mode.
  - **Wallpaper:** Change the Home screen background wallpaper.
  - **Screen swipe effect:** Select an effect to apply when the Home screen canvas switches.

- **Icon shape:** Choose if you want icons to have square or rounded corners.
- **Google feed:** Enable Google feed to show to the left of Home screen.
- **Sort apps by:** Set how apps are sorted on the Home screen.
- **Grid:** Change the app arrangement mode for the Home screen.
- **Hide apps:** Select which apps you want to hide from the Home screen.
- **Loop Home screen** (This function is available when Google feed is enabled.): Enable to allow continuous Home screen scrolling (loop back to first screen after the last screen).
- **Search:** Search by swiping down on the Home screen.
- **Home screen lock:** Turn on to prevent apps and widgets from being rearranged or removed.

## Screen lock

### Screen lock overview

Your device's screen turns off and locks itself if you press the Power/Lock key. This also happens after the device is left idle for a specified period of time.

If you press the Power/Lock key when a screen lock is not set, the Home screen appears immediately.


To ensure security and prevent unwanted access to your device, set a screen lock.



- A screen lock prevents unnecessary touch input on the device screen and reduces battery consumption. We recommend that you activate the screen lock while not using the device.

## Setting a screen lock

There are several options available for configuring the screen lock settings.

- 1 Tap  > **Settings** > **General** > **Lock screen & security** > **Select screen lock** and then select the method you prefer.
- 2 Customize the following settings:
  - **None**: Deactivate the screen lock function.
  - **Swipe**: Swipe on the screen to unlock the screen.
  - **Pattern**: Draw a pattern to unlock the screen.
  - **PIN**: Enter a numeric password to unlock the screen.
  - **Password**: Enter an alphanumeric password to unlock the screen.



- If you incorrectly attempt to unlock the device 5 times, the screen is blocked for 30 seconds.

## Secure start-up settings

When you select Pattern, PIN or Password as a screen lock method, you can configure your device to be locked whenever turning on the device in order to secure your data.

- You cannot use all functions, except for emergency calls until you unlock the device.
- If you forget your decryption password, you cannot restore encrypted data and personal information.




## Precautions for the secure start-up feature

- If you forget your decryption password, you cannot restore encrypted data and personal information.
- Be sure to keep your screen lock passwords separately.
- If you enter the screen lock passwords incorrectly more than the specified times, the device automatically resets itself and the encrypted data and your personal information are deleted automatically and they cannot be restored.
- Be cautious not to enter incorrect screen lock passwords more than the specified times.
- When you turn on the device right after the device resets, encryption also starts. If you stop the encryption arbitrarily, the data may be damaged. Be sure to wait until the reset is completed.

## Customize Lock screen

You can customize lock screen.

- 1 Tap  > **Settings** > **General** > **Lock screen & security** > **Customize Lock screen**.
- 2 Select a function you want to set.
  - **Wallpaper**: Allow you to set the background for your Lock screen.
  - **Clock**: Allow you to set where to position the clock on the Lock screen.
  - **Shortcuts**: Allow you to choose apps to run on your Lock screen. This setting appears only when a screen lock is set.
  - **Contact info for lost phone**: Allow you to set text to be displayed on the Lock screen to identify the phone's owner.

## Secure lock settings

You can set secure lock settings.

- 1 Tap  > **Settings** > **General** > **Lock screen & security** > **Secure lock settings**.
- 2 Select a function you want to set.
  - **Make pattern visible** (shown only when Pattern is set as a screen lock): Allow you to make pattern visible.
  - **Lock timer**: Allow you to set the amount of time before the screen automatically locks after the backlight turns off (time-out due to inactivity).
  - **Power key instantly locks**: Enable this option to instantly lock the screen when the Power/Lock button is pressed. This setting overrides the Security Lock timer setting.
  - **Show lockdown option** (shown only when a screen lock is set): Enable this option to display the Lockdown icon when you press and hold the Power/Lock button. Tap the Lockdown icon to turn off Smart Lock, biometric unlocking, and notifications on the lock screen.
  - **Smart Lock**: Allow you to set trusted devices, places, voice, and/or on-body detection that will allow your phone to remain unlocked.



- Menus you can set may be different depending on lock screen methods you choose.

## KnockON

You can turn the screen on or off by double-tapping the screen.



- This option is available only on the Home screen provided by LG. It may not function properly on a custom launcher or on the Home screen installed by the user.
- When tapping the screen, use your fingertip. Do not use a fingernail.
- To use the KnockON feature, make sure that the proximity/light sensor is not blocked by a sticker or any other foreign substance.

### Turning the screen on

Double-tap the middle of the screen.

- Tapping the top or bottom of the screen may decrease the recognition rate.


### Turning the screen off

Double-tap on an empty space on the Home screen and Lock screen.

You can also double-tap an empty space on the status bar.

# Memory card encryption

You can encrypt and protect data saved on the memory card. The encrypted data in the memory card cannot be accessed from another device.

- 1 Tap  > **Settings** > **General** > **Lock screen & security** > **Encryption & credentials** > **Encrypt SD card**.
- 2 Read the on-screen overview of memory card encryption and then tap **CONTINUE** to continue.
- 3 Select an option and tap **ENCRYPT NOW**.
  - **New data encryption:** Encrypt only data that is saved on the memory card after encryption.
  - **Full encryption:** Encrypt all the data currently saved on the memory card.
  - **Exclude media files:** Encrypt all files, except for media files such as music, photos and videos.



- Once memory card encryption starts, some functions are not available.
- If the device is turned off while encryption is underway, the encryption process will fail, and some data may be damaged. Therefore, be sure to check if the battery level is sufficient before starting encryption.
- Encrypted files are accessible only from the device where the files were encrypted.
- The encrypted memory card cannot be used on another LG device. To use the encrypted memory card on another mobile device, format the card.
- You can activate memory card encryption even when no memory card is installed into the device. Any memory card that is installed after encryption will automatically be encrypted.

# Taking screenshots


You can take screenshots of the current screen you are viewing.

## Via a shortcut


Press and hold the Power/Lock key and the Volume Down (-) key at the same time for at least two seconds.

- Screenshots can be viewed from the **Screenshots** folder in the **Gallery**.

## Via Capture+

On the screen where you want to take a screenshot, drag the status bar downwards, then tap .



- When the screen is turned off or locked, you can access **Capture+** by pressing the Volume Up (+) key twice. To use this feature, tap  > **Settings** > **General** > **Shortcuts** and turn on **Open Capture+**.
- See *Writing notes on a screenshot* for details.

# Entering text

## Using the Smart keyboard

You can use the Smart keyboard to enter and edit text.

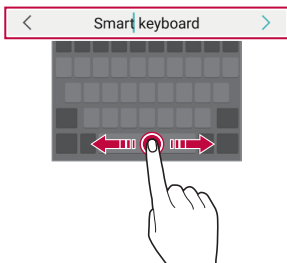
With the Smart keyboard, you can view text as you type without bothering to alternate between the screen and a conventional keyboard. This allows you to easily find and correct errors when typing.



- LG keyboard is not default on your phone. You can change it from the keyboard settings.

## Moving the cursor


With the Smart keyboard, you can move the cursor to the exact position you want. When typing text, touch and hold on the space bar and then drag left or right.

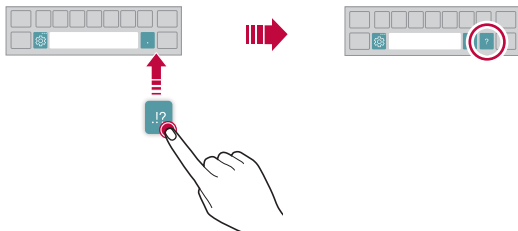


- This option is available only on the QWERTY keyboard.

## Changing the QWERTY keyboard layout

You can add, delete or rearrange keys on the bottom row of the keyboard.


- 1 Tap  > **Settings** > **General** > **Language & keyboard** > **On-screen keyboard** > **LG Keyboard** > **Keyboard height and layout** > **QWERTY layout**.
- 2 Tap a key on the bottom row, then drag it to another position.
  - You can select and organize frequently used symbols.

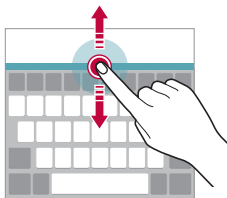


- This option is available on the QWERTY, QWERTZ and AZERTY keyboards.
- This function may not be supported for some languages.

## Customizing the keyboard height


You can customize the keyboard height to maximize hand comfort when typing.

- 1 Tap  > **Settings** > **General** > **Language & keyboard** > **On-screen keyboard** > **LG Keyboard** > **Keyboard height and layout** > **Keyboard height**.
- 2 Adjust the keyboard height.



## Selecting a landscape keyboard mode

You can select a landscape keyboard mode from several choices.

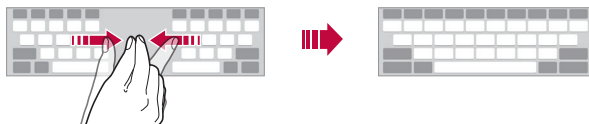
- 1 Tap  > **Settings** > **General** > **Language & keyboard** > **On-screen keyboard** > **LG Keyboard** > **Keyboard height and layout** > **Keyboard type in landscape**.
- 2 Select a keyboard mode.



## Splitting the keyboard


You can split the keyboard in half and place each piece on either side of the screen when the screen is in landscape mode.

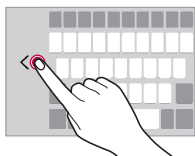
To split the keyboard, turn the device horizontally and spread it apart on both sides with holding the keyboard with two fingers. To attach the keyboard, close it with pressing with two fingers.



## One-handed operation mode


You can move the keyboard to one side of the screen so that you can use the keyboard with one hand.

- 1 Tap  > **Settings** > **General** > **Language & keyboard** > **On-screen keyboard** > **LG Keyboard** > **Keyboard height and layout** > **One-handed operation**.
- 2 Press the arrow displayed next to the keyboard to move the keyboard in the direction you want.




## Adding languages to the keyboard

You can make additional languages available for keyboard input.

- 1 Tap  > **Settings** > **General** > **Language & keyboard** > **On-screen keyboard** > **LG Keyboard** > **Select languages**.
- 2 Select the languages you want to make available.

## Copy and Paste

You can cut or copy text from an app, and then paste the text into the same app. Or, you can run other apps and paste the text into them.



- 1 Touch and hold around the text you want to copy or cut.
- 2 Drag  to specify the area to copy or cut.
- 3 Select either **Cut** or **Copy**.
  - Cut or copied text is automatically added to the clip tray.
- 4 Touch and hold the text input window, then select **Paste**.



- If there is no item that has been copied or cut, the **Paste** option will not appear.

## Clip Tray

If you copy or cut an image or text, it is automatically saved to the clip tray and can be pasted to any space at any time.


- 1 You can touch and hold the text input window, then select **Clip Tray**.
- 2 Select and paste an item from the clip tray.
  - A maximum of 20 items can be saved to the clip tray.
  - Tap  to lock saved items in order not to delete them, even when the maximum quantity is exceeded. A maximum of ten items can be locked. To delete locked items, unlock them first.
  - Tap  to delete the items saved to the clip tray.



- The clip tray may not be supported by some downloaded apps.

# Do not disturb

You can limit or mute notifications to avoid disturbances for a specific period of time.

Tap  > **Settings** > **Sound** > **Do not disturb**.

- **Mode** and select the mode you want:
  - **Priority only**: Receive sound or vibrate notifications for the selected apps. Even when Priority only is turned on, alarms still sound.
  - **Total silence**: Disable both the sound and vibration.
- **Select priorities**: Receive alarms and the notifications for the selected apps.
  - **App notifications**: Select apps to receive the notifications.
  - **Calls from**: Set up a range of notifications when receiving a call.
  - **Repeated calls**: Second call from same caller within 15 min is not silenced.
  - **Messages from**: Set up a range of notifications when receiving a message.
- **Use Do not disturb**: Turn on the Do not disturb feature.
- **SCHEDULE**: Set the schedule for which you want to turn on the Do not disturb feature.



03

## Useful Apps

# Installing and uninstalling apps

## Installing apps

Access an app store to search and download apps.

- You can use SmartWorld, Play Store or the app store provided by your service provider.



- Some app stores may require you to create an account and sign in.
- Some apps may charge fees.
- If you use mobile data, you may be charged for data usage, depending on your pricing plan.
- SmartWorld may not be supported depending on the area or service provider.

## Uninstalling apps


Uninstall apps that you no longer use from your device.

### Uninstalling with the touch and hold gesture

On the Home screen, touch and hold the app to uninstall, then drag it over **Delete** at the top of the screen.

- If apps were uninstalled within 24 hours from now, you can reinstall them. See [App trash](#) for details.

### Uninstalling by using the settings menu

Tap  > **Settings** > **General** > **Apps & notifications** > **App info**, select an app, then tap **Uninstall**.



- Some apps cannot be uninstalled by users.

## Uninstalling apps from the app store

To uninstall an app, access the app store from which you download the app and uninstall it.

## Installing and uninstalling apps during the setup

When you turn on the device for the first time, you can download recommended apps.

You can skip to the next step without installation.


## App trash

You can view the uninstalled apps on the Home screen. You can also reinstall apps which were uninstalled within 24 hours from now.

### 1 Tap > **Management** > **App trash**.

You can also touch and hold an empty area of the Home screen, then tap **App trash**.

### 2 Activate the desired function:



- **Restore**: Reinstall the selected app.
-  : Remove the uninstalled apps permanently from the device.

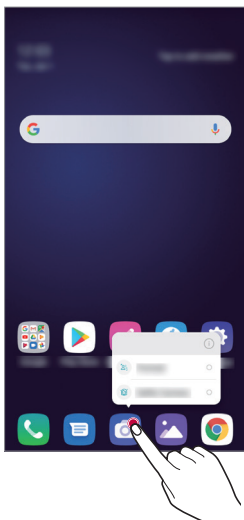


- Uninstalled apps are automatically removed from the device 24 hours after they were uninstalled. If you want to reinstall the uninstalled apps, you must download them again from the app store.
- This feature is activated on the default Home screen only. If you uninstall apps while using the EasyHome screen or other launcher, they are immediately and permanently removed from the device.

# App Shortcuts

On the Home screen, touch and hold an app icon such as Call, Message, Camera, Gallery and Settings to display a quick access menu. Use apps more easily through App Shortcuts.

- Tap  to configure the settings for the desired app's widget.
- Tap  to view the information for the desired app.







- This feature is available only on some apps.

# Phone

## Voice call

Make a phone call by using one of the available methods, such as manually entering a phone number and making a call from the contact list or the list of recent calls.




### Making a call from the keypad

- 1 Tap  >  > **Dial**.
- 2 Make a call by using a method of your choice:
  - Enter a phone number and tap .
  - Touch and hold a speed dial number.
  - Search for a contact by tapping the initial letter of a contact name in the contact list, and then tap .




- To enter "+" when making an international call, touch and hold number 0.
- See [Adding contacts](#) for details on how to add phone numbers to the speed dial list.


### Making a call from the contact list

- 1 Tap  >  > **Contacts**.
- 2 From the contact list, select a contact and tap .





## Answering a call

To answer a call, drag  on the incoming call screen.

- When the stereo headset is connected, you can make calls by using the call/end button on the headset.
- To end a call without turning off the screen, tap  > **Settings** > **Network** > **Call** > **Answer and end calls** and then activate **End call with the Power key**.

## Rejecting a call

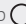
To reject an incoming call, drag  across the incoming call screen.

- To send a rejection message, drag the rejection message option  across the screen.
- To add or edit a rejection message, tap  > **Settings** > **Network** > **Call** > **Call blocking & Decline with message** > **Decline with message**.
- When a call is coming in, press the Volume Up (+), Volume Down (-) or Power/Lock key to mute ringtone or vibration, or to hold the call.




## Checking an incoming call while using an app

When a call comes in while using an app, a pop-up notification can be displayed at the top of the screen. You can receive the call, reject the call, or send message from the pop-up screen.





- Tap  > **Settings** > **Network** > **Call** > **Additional settings** > **Incoming voice call pop-up** and then select the desired way you would like to display the incoming call while using an app.

## Viewing missed calls

If there is a missed call, the status bar at the top of the screen displays . To view missed call details, drag the status bar downwards. You can also tap  >  > **Call logs**.

## Functions accessible during a call

During a call, you can access a variety of functions by tapping the on-screen buttons:



- **Contacts**: View the contact list during a call.
- **Hold**: Hold a call.
- **Dialpad**: Display or hide the dial pad.
- **Speaker**: Turn on the speakerphone function.
- **Mute**: Mute your voice so that your voice cannot be heard by the other party.
- **Bluetooth**: Switch the call to a Bluetooth device that is paired and connected.
-  : End a call.
-  : Access additional call options.



- Available settings items may vary depending on the area or service provider.

## Making a three-way calling

You can make a call to another contact during a call.



- 1 During a call, tap  > **Add call**.
- 2 Enter a phone number and tap .
  - The two calls are displayed on the screen at the same time, and the first call is put on hold.
- 3 To start a conference call, tap **Merge calls**.



- You may be charged a fee for each call. Consult with your service provider for more information.

## Viewing call records

To view recent call records, tap  >  > **Call logs**. Then, you can use the following functions:




- To view detailed call records, select a contact. To make a call to the selected contact, tap .
- To delete call records, tap  > **Delete**.



- The displayed call duration may differ from the call charge. Consult with your service provider for more information.
- The deleted call history can not be restored.
- Pinch two fingers or spread your fingers apart to adjust the font size of call logs or contacts.

## Configuring call options

You can configure various call options.

- 1 Tap  >  > **Dial** or **Call logs**.
- 2 Tap  > **Call settings** and then configure the options to suit your preferences.

# Messaging

## Sending a message

You can create and send messages to your contacts using the Messaging app.



- Sending messages abroad may incur additional charges. Consult with your service provider for more information.

- 1 Tap > .
- 2 Tap or .
- 3 Specify a recipient and create a message.
  - To use multimedia options, tap .
  - To access optional menu items, tap .
- 4 Tap to send the message.

## Reading a message

You can view exchanged messages organized by contact.

- 1 Tap > .
- 2 Select a contact from the message list.

## Configuring messaging settings

You can change messaging settings to suit your preferences.

- 1 Tap > .
- 2 Tap > **Settings** from the message list.

# Camera

## Starting the camera

You can take a photo or record a video to cherish all of your memorable moments.



Tap  > .



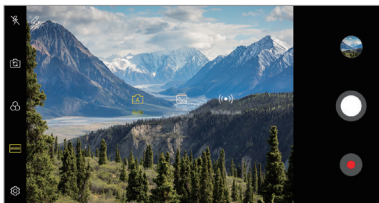
- Before taking a photo or recording a video, wipe the camera lens with a soft cloth.
- Be careful not to stain the camera lens with your fingers or other foreign substance.
- Images included in this user guide may be different from the actual device.
- Photos and videos can be viewed or edited from the Gallery. See [Gallery overview](#) for details.

## Changing the camera mode

You can select a camera mode that suits your environment to take a photo or record a video easily and conveniently.

Tap  >  > **MODE**, then select the desired mode.

- Press and hold the Mode icon and drag it to the desired location to change the mode order.



## Auto mode

You can take photos or record videos by selecting a variety of camera modes and options.

- 1 Tap > , then tap **MODE > Auto** ().
- 2 To take a photo, tap . To record a video, tap .








## Taking a photo

- 1 Select a camera mode and tap the subject to focus the camera on.
- 2 Tap to take a photo.




- When the screen is turned off or locked, start the camera by pressing the Volume Down (-) key twice. Tap > **Settings > General > Shortcuts** and then tap **Open Camera** to activate it.

## Recording a video


- 1 Select a camera mode and tap the subject to focus the camera on.
- 2 Tap .
  - To take a photo while recording a video, tap .
  - To pause the video recording, tap . To resume the video recording, tap .
  - While recording a video, you may spread or pinch two fingers to zoom in or out.
  - While recording a video, you may tap the desired area to adjust the brightness.
- 3 Tap  to end the video recording.



- To check the aspect ratio before recording a video, press and hold .





## Customizing the camera options

You can customize a variety of camera options to suit your preferences.

Tap  on the screen.



- Available options vary depending on the selected camera (front or rear camera) and the selected camera mode.

- : Take a photo in FullVision.
- : Select values for aspect ratio and size for taking photos.
- : Select values for resolution and size for recording videos.
- : Set the timer to automatically take photos or record videos after a specified period of time.

|                       |  |
|-----------------------|--|
| <b>HDR</b>            | Obtain photos in vivid colours and get compensated effects even when they are taken against the light. These functions are provided by the high dynamic range (HDR) technology equipped in the camera. |
| <b>Cheese shutter</b> | Take photos with voice commands.   |
| <b>Scan QR code</b>   | Scan QR code on the camera preview screen.   |
| <b>Tag locations</b>  | Save the image with GPS location data.   |
| <b>Grid</b>           | Display guide grids so that you can take photos or record videos based on the horizontal and vertical reference lines.   |
| <b>Storage</b>        | Select if you want to store the pictures and videos in the Internal storage or SD card. (Available when a memory card is inserted.)  |
| <b>Help</b>           | Provide Help for each camera menu.   |

## Additional options on the front camera

|                        |  |
|------------------------|--|
| <b>Selfie shot</b>     | Take a selfie by selecting its option between <b>Gesture shot</b> and <b>Auto shot</b> . |
| <b>Save as flipped</b> | Save as flipped images after taking selfies.   |



## Various camera modes




### Flash Jump-Cut

You can create a GIF by taking photos at an regular interval.

See *Flash Jump-Cut* for details.

### YouTube Live

You can record a video and directly upload to YouTube.

- 1 Tap , then tap **MODE** > .
- 2 Tap  and record a video.

To use this feature, you need to verify your phone number.

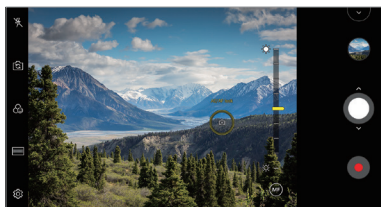


- YouTube Live is available only when your device is connected to the Internet. If you use mobile data, you may be charged for data usage, depending on your pricing plan.

## Other useful features in the Camera app

### Auto-Exposure/Auto-Focus lock


You can fix the current exposure level and focus position by touching and holding the screen in the Auto mode. To turn off the feature, tap a blank area on the screen.

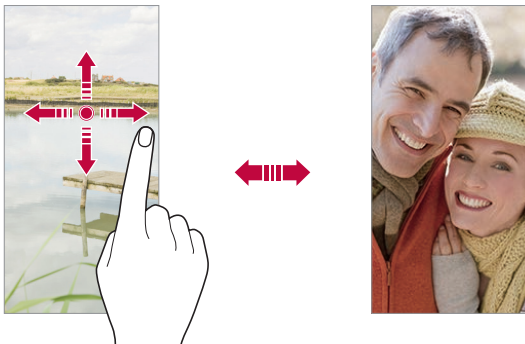


- This feature is available only in specific modes.

## Switching between cameras

You can switch between the front and rear cameras to suit your environment.


On the camera screen, tap  or drag the screen in any direction to switch between the front and rear cameras.



- Use the front camera to take selfies. See *Selfie shot* for details.

## Zoom in or out

You can use zoom in or out on the camera screen while taking a photo or recording a video.

- On the camera screen, pinch or spread two fingers to zoom in or out, then use the displayed slide bar.
- You can also drag the  button up or down. This feature is available only in specific modes.



- The zoom feature is not available when using the front camera in selfie mode.

## Selfie shot

You can use the front camera to view your face on the screen and take selfies.

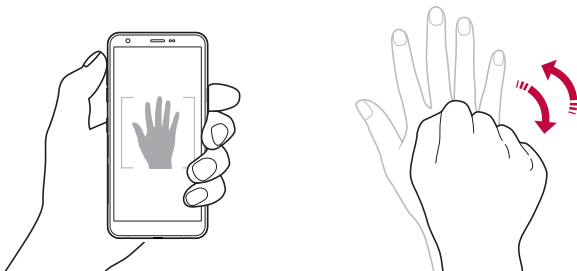
## Gesture shot


You can take selfies by using gestures.

Show your palm to the front camera and then clench your fist.

You can also clench your fist and then open it towards the front camera.

- In three seconds, a photo is taken.

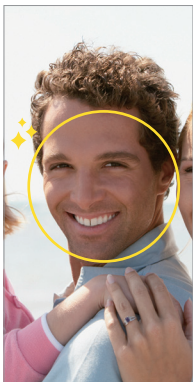


- To use this feature, switch to the front camera mode, then tap  > **Selfie shot > Gesture shot**.
- Make sure that your palm and fist are within the reference line so that the camera can detect them.
- This feature may not be available while using some of the camera features.

## Auto shot

You can use the face detection feature to take selfies easily and conveniently. You can set the device so that, when you look at the screen, the front camera detects your face and takes a selfie automatically.

- The white coloured guide frame appears when the front camera detects your face. If the subject within the guide frame stops moving, the guide frame colour turns yellow, then the camera takes a photo.



• Tap  > **Selfie shot** > **Auto shot** to enable the Auto shot feature.

## Interval shot

You can take selfies at an interval.

While using the front camera, you can show your palm to the camera, then clench your fist twice quickly.

- Four photos are taken at regular intervals after a timer delay of three seconds.

## Save as flipped

Before taking a photo with the front camera, tap ⚙️ > **Save as flipped**. The image is flipped horizontally.

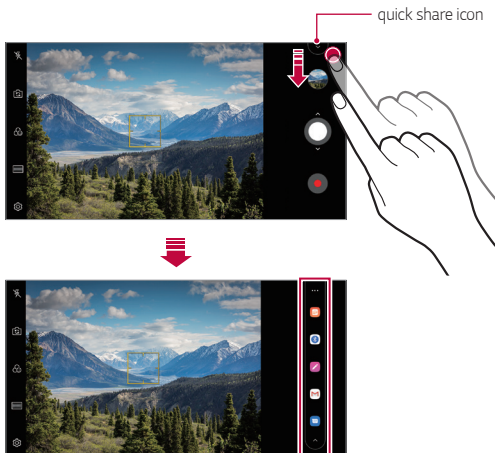


- When using the front camera, you can change how selfies are taken in the camera options. See *Customizing the camera options* for details.

## Quick share

You can share a photo or video to the app you want immediately after taking it.

- 1 Tap ○ > 📷, then take a photo or record a video.
- 2 Tap the app icon that appears on the screen to share it using that app. You can also swipe the icon towards the opposite direction to see what other apps you can use to share your photos and videos.





- The app displayed by the quick share icon may vary, depending on the type and frequency of access to the apps installed on the device.
- This feature is available only in specific modes.

# Gallery




## Gallery overview

You can view and manage photos and videos saved on your device.

1 Tap  > .

- Saved photos and videos are displayed by folder.

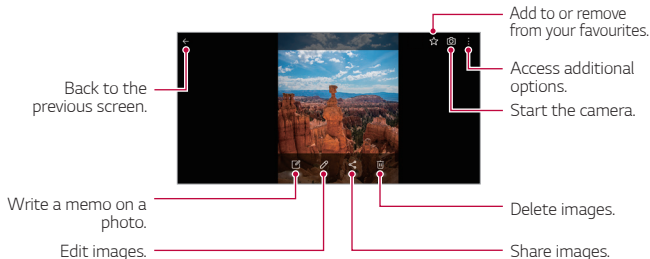
2 Tap a folder and select a file.

- View the selected file in full-screen mode.
- While viewing a photo, swipe left or right to view the previous or next photo.
- While viewing a video, swipe left or right to rewind or fast-forward the video.
- You can view the photos or videos organized by year, month or day in the Photos tab.
- To view photos by location at which the photo was taken, tap  >  > **Tag locations**, then tap . The photos are automatically grouped by location under the Memory tab of the Gallery app.




- Some file formats may not be supported, depending on the installed software.
- Some files may not be opened due to encoding.
- Files that exceed the size limit may cause an error.
- You need to activate the GPS feature to create Memory albums.

## Viewing photos



- To display the menu items, gently tap the screen. To hide the menu items, tap the screen again.


## Writing a memo on the photo

- 1 While viewing a photo, tap .
- 2 Write a memo on the photo and tap **SAVE**.
  - The memo is applied to the photo.

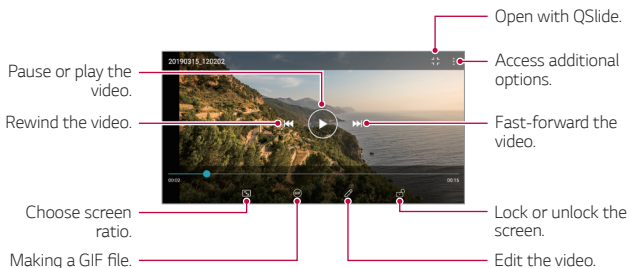


- Some photos may not support the photo memo feature.

## Editing photos


- 1 While viewing a photo, tap .
- 2 Use a variety of effects and tools to edit the photo.

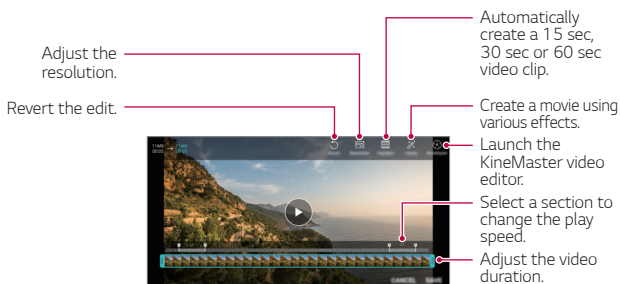
# Playing a video



- To adjust the sound volume, drag the right side of the video screen up or down.
- To adjust the screen brightness, drag the left side of the screen up or down.

## Editing videos

- While viewing a video, tap .
- Use a variety of effects and edit tools to edit the video.



- Tap **SAVE** to save changes.



## Creating a movie

You can create a new movie by putting images and videos together.

See *Creating a movie* for details.



## Making a GIF

You can easily make a GIF file using recorded video.

See *Making a GIF* for details.




## Deleting files

You can delete files by using one of the following options:

- Touch and hold a file from the file list, then tap **Delete**.
- Tap  from the file list and delete the desired files.
- Deleted files are automatically moved to **Trash** and they can be restored to the Gallery within 7 days.
- Tap  to completely delete the files. In this case, the files cannot be restored.

## Sharing files

You can share files by using one of the following options:

- While viewing a photo, tap  to share the file by using the method you want.
- While viewing a video, tap  to share the file by using the method you want.
- Tap  from the file list to select files and share them using the method you want.

# Contacts


## Contacts overview

You can save and manage contacts.

Tap  > **Essentials** > **Contacts**.


## Adding contacts

### Adding new contacts


- 1 On the contact list screen, tap .
- 2 Enter contact details and tap **SAVE**.

### Importing contacts


You can import contacts from another storage device.

- 1 On the contact list screen, tap  > **Manage contacts** > **Import**.
- 2 Select the source and target locations of the contact you want to import, and then tap **OK**.
- 3 Select the contacts and tap **IMPORT**.

### Adding contacts to the speed dial list


- 1 On the contact list screen, tap  > **Speed dial**.
- 2 Tap **Add contact** from a speed dial number.
- 3 Select a contact.




- While adding a new contact, tap  to add a speed dial number.

## Searching for contacts

You can search for contacts by using one of the following options:


- Tap  from the top of the contacts list and then enter the contact information or phone number.
- Scroll the contact list up or down.
- From the index of the contact list screen, tap the initial letter of a contact.



- Tap  from the top of the contacts list and then enter the contact information or phone number to display all search details from call logs, contacts and groups.


## Contacts list

### Editing contacts

- 1 On the contact list screen, select a contact.
- 2 On the contact detail screen, tap  and edit details.
- 3 Tap **SAVE** to save changes.

### Deleting contacts

You can delete contacts by using one of the following options:

- On the contact list screen, touch and hold a contact you want to delete, then tap **Delete contact**.
- Tap  > **Delete** on the contact list screen.



- Deleted contacts may not be restored.

## Adding favourites

You can register frequently used contacts as favourites.

- 1 On the contact list screen, select a contact.
- 2 On the contact detail screen, tap ☆.

## Creating groups




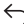







- 1 On the contacts group list, tap +.
- 2 Enter a new group name.
- 3 Tap **Add members**, select contacts, then tap **ADD**.
- 4 Tap **SAVE** to save the new group.

# QuickMemo+






## QuickMemo+ overview

You can make creative notes by using a variety of options on this advanced notepad feature, such as image management and screenshots, which are not supported by the conventional notepad.



## Creating a note

- 1 Tap  > **QuickMemo+**.
- 2 Tap  to create a note.
  -  : Save a note.
  -  : Undo the previous edit.
  -  : Redo the recently deleted edits.
  -  : Enter a note by using the keypad.
  -  : Write notes by hand.
  -  : Erase handwritten notes.
  -  : Zoom in or out, rotate or erase the parts of a handwritten note.
  -  : Access additional options.
- 3 Tap  to save the note.

## Writing notes on a photo

- 1 Tap  > **QuickMemo+**.
- 2 Tap  to take a photo, then tap **OK**.
  - The photo is automatically attached into the notepad.
- 3 Tap  or  to write notes on the photo.
  - Write notes by hand on the photo.
  - Enter text below the photo.
- 4 Tap  to save the note.

## Writing notes on a screenshot

- 1 While viewing the screen you want to capture, drag the status bar downwards and then tap .
  - The screenshot appears as the notepad background theme. Memo tools appear at the top of the screen.
- 2 Crop the image (if necessary) and take notes as desired.
  - Write notes by hand on the photo.
- 3 Tap  and save the notes to the location you want.
  - Saved notes can be viewed in either **QuickMemo+** or **Gallery**.
  - To save notes in the same location all the time, select the **Use as default app** checkbox and select an app.





- You can capture the entire screen by using the scroll capture feature.
- While using an app such as Message and Chrome, drag the notifications panel downwards and then tap **Capture+ > Extended** to capture the entire screen you are currently viewing as a single file.
- This feature is available only on some apps that support the scroll capture feature.
- Pinch two fingers or spread your fingers apart to change the memo layout.


# Clock

## Alarm

You can set an alarm to trigger it at a specified time.



- 1 Tap  > **Clock** > **Alarm**.
- 2 Tap  to add a new alarm.
- 3 Configure the alarm settings and tap **SAVE**.



- If you select a previously set alarm, you can edit the alarm.
- To delete an alarm, tap  at the top of the screen. You can also touch and hold the alarm.


## World clock

You can view the current time in cities around the world.

- 1 Tap  > **Clock** > **World clock**.
- 2 Tap  and add a city.


## Timer

You can set the timer to trigger an alarm after a specified period of time.

- 1 Tap  > **Clock** > **Timer**.
- 2 Set the time and tap **Start**.
  - To suspend the timer, tap **Pause**. To resume the timer, tap **Resume**.
- 3 Tap **Stop** to stop the timer alarm.

## Stopwatch

You can use the stopwatch to record a lap time.



- 1 Tap  > **Clock** > **Stopwatch**.
- 2 Tap **Start** to initiate the stopwatch.
  - To record a lap time, tap **Lap**.
- 3 Tap **Pause** to suspend the stopwatch.
  - To resume the stopwatch, tap **Resume**.
  - To clear all the records and restart the stopwatch, tap **Reset**.

## Calendar


### Calendar overview

You can use the calendar to manage events and tasks.

### Adding events

- 1 Tap  > **Essentials** > **Calendar**.
- 2 Select a date and then tap .
- 3 Enter event details and tap **SAVE**.

### Syncing events

Tap  > **Calendars to sync**, and select a calendar to sync.





- When your events are saved from the device to your Google account, they are automatically synced with the Google Calendar, too. Then, you can sync other devices with the Google Calendar in order to make those devices have the same events that your device has and to manage your events on those devices.




# Tasks

You can register tasks to your device to easily manage schedules.

- 1 Tap  > **Essentials** > **Tasks**.
- 2 Tap  to add a task.
- 3 Enter task details and then tap **SAVE**.

# Music

You can play and manage songs or music albums.

- 1 Tap  > **Essentials** > **Music**.
- 2 Select a category.
- 3 Select a music file.

Play music with the camera flash blinking to the beat.

Back to the previous screen.

Access additional options.

Switch to the playlist.

Tap to play from the beginning of the current file / Double-tap to play the previous file / Touch and hold to rewind.

Pause or play.

Tap to play the next file / Touch and hold to fast forward.

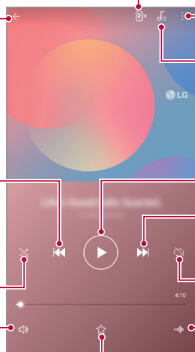
Play in random order.

Select a repeat mode.

Adjust the sound volume.

Change pitch and speed.

Add to or delete from your favourites.







- Some file formats may not be supported, depending on the installed software.
- Files that exceed the size limit may cause an error.
- Music files may be protected by international copyright owners or copyright laws. You may have to obtain legal permission before copying a music file. To download or copy a music file, first check the copyright law for the relevant country.


## Calculator

You can use two types of calculators: the simple calculator and the scientific calculator.

- 1 Tap  > **Essentials** > **Calculator**.
- 2 Use the keypad to make a calculation.
  - To restart a calculation, touch and hold the  button.

## Game Launcher

You can use Game Launcher to view the entire list of installed games, or set the device to mute or prevent any notifications while playing games.

- 1 Tap  > **Essentials** > **Game Launcher**.
- 2 Select the desired option.


# E-mail

Use the Email application to send and receive emails from your webmail or other accounts, using POP3 or IMAP, or access your Exchange account for your corporate email needs.

## Set up E-mail account








Your phone supports several types of email accounts and allows you to have multiple email accounts set up at one time.

Before setting up an email account, make sure you have the username (user ID), password, server name, etc., so you can get set up successfully.

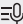
- 1 Tap  > **Essentials** > **E-mail**.
- 2 Follow the onscreen instructions to set up your email account.
  - The email account is set up and you will begin receiving email.

## Audio Recorder

You can record and save your voice or others' voices from important events. Recorded voice files can be played back or shared.

- 1 Tap  > **Essentials** > **Audio Recorder**.
  - To add an event, tap  > **Add tags** > **Add** under **Event**. Then, add an event to the desired date.
  - To save the recording's location details, tap  > **Add tags** > **Add** under **Location**.
- 2 Tap .
  - To pause recording, tap .
- 3 Tap  to end the recording.
  - The file is saved automatically and the recorded files screen appears.
- 4 Tap  to play the recorded voice.



- Tap  to view the recorded files. You can play a recorded voice file from the list.

## FM Radio

You can listen to FM radio.

Tap  > **Essentials** > **FM Radio**.



- To use this app, first connect earphones to the device. The earphones function as the radio antenna.
- This function may not be supported depending on the area.



## Update centre

You can check and install the latest version of the app or software provided by LG.

Tap  > **Management** > **Update centre**.

## File Manager

You can view and manage files saved on your device.

- 1 Tap  > **Management** > **File Manager**.
- 2 Tap  and select the desired storage location.

## Smart cleaning


You can use Smart cleaning to diagnose the device's condition and optimize it.

Tap  > **Management** > **Smart cleaning**.

# LG Mobile Switch

Easily transfer data from a used device to a new device via LG Mobile Switch.

- 1 Tap  > **Management** > **LG Mobile Switch**.

You can also tap  > **Settings** > **General** > **Backup** > **LG Mobile Switch**.

- 2 Follow the on-screen instructions to select a desired method for transfer.



- Data in a Google Account will not be backed up. When you synchronize your Google Account, Google apps, Google contacts, Google Calendar, Google memo app data and apps downloaded from the Play Store are stored on the Drive app automatically.
- Fully charge the battery before transferring data to avoid unintentional powering off during the process.

## APP trash

You can view the uninstalled apps on the Home screen. You can also reinstall apps which were uninstalled within 24 hours from now.

See *App trash* for details.

# SmartWorld

You can download a variety of games, audio content, apps and fonts provided by LG Electronics. Customize your device to suit your preferences by using Home themes and fonts.



- If you use mobile data, you may be charged for data usage depending on your pricing plan.
- This feature may not be supported depending on the area or service provider.

- 1 Tap > **Services** > **SmartWorld**.
- 2 Tap > **LG Account**, then sign in.
- 3 Select and download the desired content items.

# RemoteCall Service

Your device can be remotely diagnosed for resolving issues. First, make a phone call to an LG Customer Service Centre as follows:



- To use this function, first you must agree to usage of the function.
- If you use mobile data, you may be charged for data usage depending on your pricing plan.

- 1 Tap > **Services** > **RemoteCall Service**.
- 2 Connect a call to an LG Customer Service Centre.
- 3 After the call connects, follow the service associate's instructions to enter a six-digit access number.
  - Your device is remotely connected and the remote support service starts.

# Google apps

You can use Google apps by setting a Google Account. The Google Account registration window appears automatically when you use a Google app for the first time. If you do not have a Google Account, create one from your device. For details on how to use an app, see the Help in the app.



- Some apps may not work depending on the area or service provider.

## Calendar

The Calendar app allows you to track your schedule of events (that you created), organized by Day, 3-day, Week or Month.

## Chrome

A fast, simple, and secure web browser, built for the modern web.

## Docs

Docs is a collaborative, word-processing tool that powers productivity. Use Docs to create, edit and work together in real-time.

## Drive

Drive is a file storage and sharing app that makes it easy to find, share and collaborate on work projects from anywhere, instantly.

## Duo

Make simple, high quality video calls to your friends and family on Android phones and iPhones.

## Gmail

Gmail is an easy to use mail app that keeps your messages safe, makes your inbox smarter, and helps you stay organized.

## **Google**

The Google app keeps you in the know about the things you care about. Find quick answers, explore your interests, and get a feed of stories and updates on topics that matter to you.

## **Keep notes**

Create, edit, and share you text and photo notes with Google Account.

## **Maps**

Going somewhere? Go with Maps, the app you can rely on for real-time GPS navigation, traffic, transit, and details about millions of places, such as reviews and popular times.

## **News**

Comprehensive up-to-date news coverage, aggregated from sources all over the world by Google News.

## **Photos**

Home for all your photos and videos, automatically organized so you can share and save what matters.

## **Play Movies & TV**

Use your Google Account to rent or purchase movies. Purchase content and play it anywhere.

## **Play Music**

Purchase music from the Play Store. Play music saved on your device.

## **Sheets**

Sheets is a collaborative spreadsheet processing tool that powers productivity. Use Sheets to import, organize and analyze information together in real-time.



## Slides

Google Slides is a collaborative presentation creation tool that powers productivity. Use Slides to organize information, present results, and make decisions together in real-time.

## YouTube

Watch your favourite channels, listen to music you love, and upload videos to share with people around the world.

## Google Assistant

Your device has the Google Assistant built-in. Find answers and get things done while on-the-go. To get started, just tap the Google Assistant button on the side of the phone or touch and hold the home button of the phone.



- The Google Assistant is not available in certain languages and countries.



04



**Settings**

# Settings

You can customize the device settings in accordance with your preferences.

Tap  > **Settings**.




- Tap  and enter a keyword in the search box to access a setting item.
- Tap  to change the view mode. This user guide assumes that you are using the Tab view.

## Network

### Wi-Fi

You can connect to nearby devices over a Wi-Fi network.

#### Connecting to a Wi-Fi network

- 1 On the settings screen, tap **Network** > **Wi-Fi**.
- 2 Tap  to activate it.
  - Available Wi-Fi networks appear automatically.
- 3 Select a network.
  - You may need to enter the network's Wi-Fi password.
  - The device skips this process for previously accessed Wi-Fi networks. If you do not want to automatically connect to a certain Wi-Fi network, tap the network and then tap **FORGET**.

#### Wi-Fi network settings

On the settings screen, tap **Network** > **Wi-Fi** > **Advanced Wi-Fi**.

- **Switch to mobile data:** If the mobile data connection function is activated but the device cannot connect to the Internet via Wi-Fi connection, the device automatically connects to the Internet via the mobile data connection.




- This feature depends on the service provider.

-  : Customize Wi-Fi network settings.

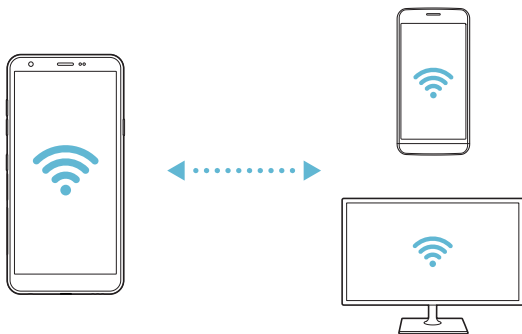
## Wi-Fi Direct

You can connect your device to other devices that support Wi-Fi Direct to share data directly with them. You do not need an access point. You can connect with more than two devices by using Wi-Fi Direct.

- 1 On the settings screen, tap **Network > Wi-Fi >  > Advanced Wi-Fi > Wi-Fi Direct**.
  - Nearby devices that support Wi-Fi Direct automatically appear.
- 2 Select a device.
  - Connection occurs when the device accepts the connection request.



- The battery may drain faster when using Wi-Fi Direct.



## Bluetooth

You can connect your device to nearby devices that support Bluetooth to exchange data with them. Connect your device to a Bluetooth headset and a keyboard. This makes it easier to control the device.

### Pairing with another device

- 1 On the settings screen, tap **Network > Bluetooth**.
- 2 Tap ☐ to activate it.
  - Available devices appear automatically.
  - To refresh the device list, tap ↻.



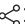
- Only devices set as visible are displayed on the list.

- 3 Select a device from the list.
- 4 Follow the on-screen instructions to perform authentication.



- This step is skipped for previously accessed devices.

### Sending data via Bluetooth

- 1 Select a file.
  - You can send multimedia files or contacts.
- 2 Tap  > **Bluetooth**.
- 3 Select a target device for the file.
  - The file is sent as soon as the target device accepts it.



- File sharing processes may differ, depending on the file.


## Mobile data

You can turn mobile data on and off. You can also manage mobile data usage.

### Turning on mobile data

- 1 On the settings screen, tap **Network > Mobile data**.
- 2 Tap  to activate it.

### Customizing mobile data settings

- 1 On the settings screen, tap **Network > Mobile data**.
- 2 Customize the following settings:
  - **Mobile data:** Set to use data connections on mobile networks.
  - **Limit mobile data usage:** Set a limit for mobile data usage to block mobile data if the limit is reached.
  -  :Customize mobile data settings.

## Call

You can customize call settings, such as voice call and international call options.



- Some features may not be supported depending on the area or service provider.

- 1 On the settings screen, tap **Network > Call**.
- 2 Customize the settings.

# Tethering

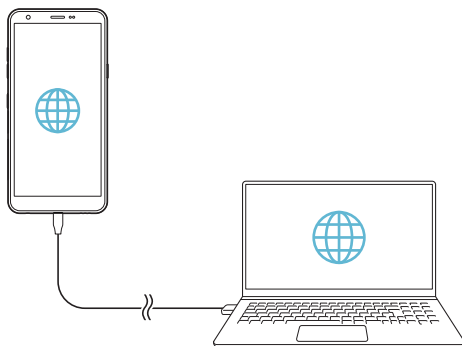
## USB tethering

You can connect the device to another device via USB and share mobile data.

- 1 Connect your device and other devices via USB cable.
- 2 On the settings screen, tap **Network** > **Tethering** > **USB tethering** and then tap ☐ to activate it.



- This option uses mobile data and may incur data usage fees, depending on your pricing plan. Consult with your service provider for more information.
- When connecting to a computer, download the USB driver from [www.lg.com](http://www.lg.com) and install it on the computer.
- You cannot send or receive files between your device and a computer while USB tethering is turned on. Turn off USB tethering to send or receive files.
- Operating systems that support tethering are Windows XP or higher, or Linux.



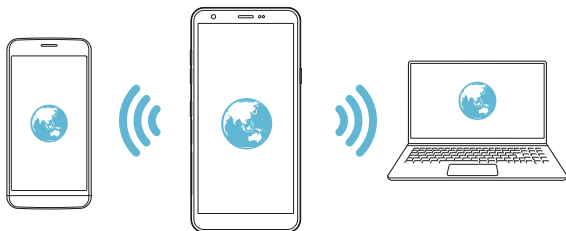
## Wi-Fi hotspot

You can set the device as a wireless router so that other devices can connect to the Internet by using your device's mobile data.

- 1 On the settings screen, tap **Network > Tethering > Wi-Fi hotspot** and then tap ☐ to activate it.
- 2 Tap **Set up Wi-Fi hotspot**, and enter the Wi-Fi name (SSID) and password.
- 3 Turn on Wi-Fi on the other device, and select the name of the device network on the Wi-Fi list.
- 4 Enter the network password.



- This option uses mobile data and may incur data usage fees, depending on your pricing plan. Consult with your service provider for more information.
- More information is available at this web site:  
<http://www.android.com/tether#wifi>




## Timeout

When the Wi-Fi hotspot has not been used for a specific period of time, it is automatically disconnected. You can set the time for automatic disconnection.



## Bluetooth tethering

A Bluetooth-connected device can connect to the Internet by using your device's mobile data.

- 1 On the settings screen, tap **Network > Tethering > Bluetooth tethering** and then tap  to activate it.
- 2 Turn on Bluetooth on both devices and pair them.



- This option uses mobile data and may incur data usage fees, depending on your pricing plan. Consult with your service provider for more information.
- More information is available at this web site:  
[http://www.android.com/tether#Bluetooth\\_tethering](http://www.android.com/tether#Bluetooth_tethering)


## Help

You can view help on using tethering and hotspots.

On the settings screen, tap **Network > Tethering > Help**.

## Sharing panel

You can share contents from Gallery, Music and File Manager with nearby devices. Also you can share content with specific people in apps that work with Google Direct Share.

- 1 On the settings screen, tap **Network > Sharing panel**.
- 2 Tap  to deactivate each option.

## LG AirDrive

You can use your LG account to manage files saved on the device from a computer. You do not need a USB connection.

- 1 On the settings screen, tap **Network > LG AirDrive**.
- 2 Use a single LG account to sign in to LG Bridge on the computer and **LG AirDrive** on the device.
  - LG Bridge software can be downloaded from [www.lg.com](http://www.lg.com).
- 3 Manage files on the device from the computer.

## Printing

You can connect your device to a Bluetooth printer and print photos or documents saved on the device.

- 1 On the settings screen, tap **Network > Printing**.



- If the desired printer is not in the list, install the printer driver from the app store.

- 2 Tap ☐ to activate it.
- 3 Select a printer from the printer list screen.
  - To add a printer, tap **:** > **Add printer**.
  - To search for a printer name, tap **:** > **Search**.
  - Tap **:** > **Settings** from the printer list screen.
- 4 Select a file and tap **:** > **Print**.
  - The document prints.



- If you do not have a Google Account, tap **ADD ACCOUNT** to create an account.

## Airplane mode

You can turn off the call and mobile data functions. When this mode is on, functions that do not involve data, such as games and music playback, remain available.

- 1 On the settings screen, tap **Network > Airplane mode**.
- 2 Tap **TURN ON** in the confirmation screen.

## Mobile networks

You can customize the mobile networks settings.

- 1 On the settings screen, tap **Network > Mobile networks**.
- 2 Customize the following settings:
  - **VoLTE**: Use high-quality voice calls and communication services on LTE.
  - **Data roaming**: Browse the web, use emails, multimedia messages and other data services overseas.
  - **Network mode**: Select a network type.
  - **Access Point Names**: View or change the access point for using mobile data services. To change the access point, select a choice from the access point list.
  - **Network operators**: Search for network operators and connect automatically to a network.



- Some features may not be supported depending on the area or service provider.

## VPN

You can connect to a safe virtual network, such as an intranet. You can also manage connected virtual private networks.

### Adding VPN

- 1 On the settings screen, tap **Network > VPN**.
- 2 Tap **+**.



- This feature is available only when the screen lock is activated. If the screen lock is deactivated, a notification screen appears. Tap **CHANGE** from the notification screen to activate the screen lock. See *Setting a screen lock* for details.

- 3 Enter VPN details and tap **SAVE**.

### Configuring VPN settings

- 1 Tap a VPN from the **VPN** list.
- 2 Enter the VPN user account details and tap **CONNECT**.
  - To save the account details, select the **Save account information** checkbox.

## Private DNS

You can configure the Private DNS (Domain Name System) options.

- 1 On the settings screen, tap **Network > Private DNS**.
- 2 Select the desired option and tap **SAVE**.

# Sound

You can customize sound, vibrate and notification settings.

On the settings screen, tap **Sound** and customize the following settings:

- **Sound profile:** Change the sound mode to **Sound, Vibrate only**, or **Silent**.
- **Volume:** Adjust the sound volume for various items.
- **Ringtone:** Select a ringtone for incoming calls. Add or delete ringtones.
- **Ringtone ID:** Create a ringtone for an incoming call from a particular contact.
- **Ring with vibration:** Set the device to vibrate and play a ringtone simultaneously.
- **Flash alert for incoming call:** Set the flash to blink according to LG ringtone.
- **Notification sound:** Select a notification ringtone. Set music saved on the device as a notification ringtone.
- **Do not disturb:** Set the time, range and app type to receive notification messages. Receive notification messages only on particular days of the week.
- **Vibration type:** You can select the type of vibration when receiving calls.
- **SOUND EFFECTS:** Allows you to set when a sound is emitted to notify you of an event. Enable **Dialing keypad sound**, **LG Keyboard sound**, **Touch sound**, and **Screen lock sound**.

# Display

You can customize detailed settings for each screen type.

On the settings screen, tap **Display** and customize the following settings:

- **Home screen:** Customize settings for the Home screen. See *Home screen settings* for details.
- **Wallpaper & theme:** Select a screen wallpaper, theme, and icons for your device.
- **Font:** Change the font size, bold text or type.
- **Home touch buttons:** Rearrange Home touch buttons or change their background colours.
- **App scaling:** Adjust the screen size of apps.
- **Display size:** Set the items on the screen to a size easy for you to see. Some items may change position.
- **Comfort view:** Set the device to reduce amount of blue light on screen to reduce eye strain.
- **Brightness:** Use the slide bar to change the device's screen brightness. To automatically adjust screen brightness according to ambient light intensity, tap the **Auto** switch.
- **Auto:** Set the device so that the screen brightness is automatically adjusted in accordance with the ambient light intensity.
- **Auto-rotate screen:** Automatically rotate the screen according to the device's orientation.
- **Screen timeout:** Automatically turn off the screen when the device is left idle for a specified period of time.
- **Screen saver:** Display a screen saver when the device is connected to the holder or charger. Select a screen saver type to display.

# General

## Lock screen & security

You can customize lock screen and security settings.

- **Google Play Protect:** Scans your device daily for potentially harmful apps.
- **Find My Device:** Remotely track the device location. You can also protect your data securely if you lost your device.
- **Security update:** Check for software update and configure automatic installation settings.
- **Select screen lock:** Select the desired screen lock method. See *Setting a screen lock* for details.
- **Customize Lock screen:** Change the information displayed on the locked screen.
- **Secure lock settings:** Change the secure lock settings.
- **Content lock:** Allow you to set a lock type (password or pattern) for your QuickMemo+ memo.
- **Location:** You can customize how your location information is used by particular apps.
- **Encryption & credentials:** Configure the settings for SD card encryption and credentials.
  - **Encrypt SD card:** Encrypt the memory card to prevent use on another device. See *Memory card encryption* for details.
  - **Secure start-up:** Protect your device with a lock when it powers on. See *Secure start-up settings* for details.
  - **Credential protection:** View the type of the storage where the security certificate will be saved.
  - **Trusted credentials:** View your system's root CA certificates and user-installed CA certificates.
  - **User credentials:** View and change secure certificate information stored on your device.

- **Install from storage:** Install a secure certificate from a storage.
- **Clear credentials:** Delete user-installed secure certificates and related credentials.
- **Set up SIM card lock:** Lock or unlock the SIM card, or change the password (PIN).
- **Make passwords visible:** Enable this option to briefly show each character of the password as you type it so you can see what you've entered.
- **Phone administrators:** Allow privileges to restrict the control or use of the device to particular apps.
- **Trust agents:** View and use trust agents installed on the device.
- **Screen pin:** Fix the app screen so that only the currently active app can be used.
- **Usage access:** View details on usage of apps on the device.

## Apps & notifications

You can check a list of installed apps, and configure the settings for notifications, app permissions, and more.

- 1 On the settings screen, tap **General > Apps & notifications**.
- 2 Customize the settings.

## Battery

You can view the current battery information or turn on power-saving mode.


- 1 On the settings screen, tap **General > Battery**.
- 2 Customize the following settings:
  - **Battery usage:** View the battery usage details. To view more details, select a specific item.
  - **Battery percentage on status bar:** Display the remaining battery level as a percentage on the status bar.



- **Adaptive battery:** Limit battery for apps you don't use often by limiting their activity in the background.
- **Background restrictions:** Choose apps to save battery by restricting apps from running in the background.
- **Battery saver:** Reduce battery consumption by cutting down some device settings, such as the display brightness, speed and vibration intensity.
- **Power saving exclusions:** Select apps to use without any functional limitation while in power saving or battery optimization mode.

## Storage

You can view and manage internal storage on the device or storage space of the memory card.

- 1 On the settings screen, tap **General > Storage**.
- 2 Customize the following settings:
  - **Internal storage:** View the total storage space and free space in the device's internal storage. View a list of apps in use and the storage capacity for each app.
  - **SD card:** View the total storage space and free space in the memory card. This option appears only when a memory card is inserted. To unmount the memory card, tap .

## Accounts


You can add users to share your device and register a cloud account.

- 1 On the settings screen, tap **General > Accounts**.
- 2 Customize the settings.

# Accessibility

You can manage accessibility plug-ins installed on your device.

- 1 On the settings screen, tap **General > Accessibility**.
- 2 Customize the following settings:
  - **Vision > TalkBack**: Set the device to notify screen status or actions via voice.
  - **Vision > Voice notifications**: Set the device to read the caller information via voice.
  - **Vision > Font**: Change the font size, bold text or type.
  - **Vision > Display size**: Set the items on the screen to a size easy for you to see. Some items may change position.
  - **Vision > Touch zoom**: Zoom in or out by tapping the screen three times.
  - **Vision > Window zoom**: Zoom in or out within a window and invert the colour.
  - **Vision > Large mouse pointer**: Magnify the mouse pointer.
  - **Vision > High contrast screen**: Turn the background colour into black for a high contrast screen.
  - **Vision > Screen colour inversion**: Increase the display colour contrast for people with low vision.
  - **Vision > Screen colour adjustment**: Adjust the display colour.
  - **Vision > Grayscale**: Switch the screen to grayscale mode.
  - **Vision > End call with the Power key**: End a call by pressing the Power/Lock key.
  - **Hearing > Captions**: Turn on the subtitle service when playing videos for the hearing impaired.
  - **Hearing > Flash alerts**: Set the device to notify you with a blinking light for incoming calls, messages and alarms.
  - **Hearing > Mute all sounds**: Mute all sounds and lower volume on the receiver.

- **Hearing > Audio channel:** Select the audio type.
- **Hearing > Sound balance:** Adjust the audio output balance. Use the slide bar to change the balance.
- **Motor & cognition > Touch assistant:** Turn on the touch board to make buttons and gestures easier to use.
- **Motor & cognition > Touch input:** Enter text by touching and holding the screen or modify it by simply touching the screen.
- **Motor & cognition > Physical keyboard:** Customize the keyboard settings.
- **Motor & cognition > Auto mouse click:** Automatically click the mouse pointer in case of no movement.
- **Motor & cognition > Touch and hold for calls:** Answer or decline calls by touching and holding the call button instead of dragging it.
- **Motor & cognition > Screen timeout:** Turn off the screen automatically when the device is left idle for a specified period of time.
- **Motor & cognition > Touch control areas:** Limit the touch area so that only a particular portion of the screen can be controlled by touch input.
- **Accessibility features shortcut:** Quickly access a frequently used function by tapping  three times.
- **Auto-rotate screen:** Automatically change the screen orientation according to the physical position of the device.
- **Select to Speak:** Allow you to tap items to hear spoken feedback.
- **Switch Access:** Create key combinations to control your device.

## Google

You can use Google settings to manage your Google apps and account settings.

On the settings screen, tap **General > Google**.

## Smart cleaning

You can use Smart cleaning to diagnose the device's condition and optimize it.

On the settings screen, tap **General > Smart cleaning**.

## Gaming

You can configure settings for game tools, graphics and battery saving feature.

- **Game Launcher:** Tap ☐ to use the game launcher.
- **Game tools:** Tap ☐ to activate this feature. You can launch this feature by tapping the game tool icon at the bottom of the screen while playing games.
- **Game graphics:** Adjust the game graphics.



- When you change the resolutions on some games, the screen display feature may not work properly.

- **Break time:** Reduce the screen brightness and performance whenever you leave the game running for more than 5 minutes.

## Shortcuts

You can customize the shortcut keys settings.

- 1 On the settings screen, tap **General > Shortcuts**.
- 2 Customize the following settings.
  - **Open Camera:** Press Power key twice to open Camera.
  - **Open Capture+:** Press Volume Up key twice to open **Capture+** when the screen is locked or off.
  - **Open Camera:** Press Volume Down key twice to open **Camera** when the screen is locked or off.
  - **Open Google Assistant:** Press the Google Assistant key on the side of the phone.

- **Talk to Google Assistant:** Press and hold the Google Assistant key to quickly talk to your Assistant.
- **Show visual snapshot:** Press the Google Assistant key twice to see a snapshot of your day in the Google Assistant app.

## KnockON

Double-tap the screen to turn the screen on or off.

See *KnockON* for details.

## Update centre

You can check and install the latest version of the app or software provided by LG.

- 1 On the settings screen, tap **General > Update centre**.
- 2 Customize the following settings:
  - **App Updates:** Check if an app update is available. If available, you can install the update.
  - **Software Update:** Check if a software update is available. If available, you can install the update.

## Language & keyboard

You can customize language and keyboard settings for your device.

- 1 On the settings screen, tap **General > Language & keyboard**.
- 2 Customize the following settings:
  - **Language:** Select a language to apply for the device.
  - **Default keyboard:** View the keyboard currently in use. Select a keyboard to use when entering text.
  - **On-screen keyboard:** Change the LG keyboard settings or voice recognition feature of Google Voice.
  - **Physical keyboard:** Select to use the physical keyboard, or check keyboard shortcut keys.

- **Spelling correction:** Allow you to set various options for the Google Spell Checker feature.
- **Autofill service:** Enable this option to enter your information saved in your account such as password, address, or credit card number with a single tap. You can also disable this option, use Google Autocomplete, or add a new service account.
- **Text-to-speech output:** Configure the settings for text-to-speech output.
- **Pointer speed:** Adjust the pointer speed of a mouse or trackpad.
- **Reverse mouse buttons:** Reverse the mouse buttons to use primary button on right.

## Date & time

You can customize date and time settings for your device.

- 1 On the settings screen, tap **General > Date & time**.
- 2 Customize the settings.

## Memory

You can view the average amount of memory usage over a certain period of time and the memory occupied by an app.

- 1 On the settings screen, tap **General > Memory**.
- 2 Tap ▼ to set a time slot to retrieve data.

## Backup

You can back up data saved on your device to another device or account.

- 1 On the settings screen, tap **General > Backup**.
- 2 Customize the following settings:
  - **LG Mobile Switch:** Allow you to transfer data from an old LG device to your new LG device.
  - **Backup & restore:** Back up your device data or restore data to your device from a backup.



- Resetting your device may delete backup files saved in storage. Make sure to copy and store the important backup files to your PC.
- **Google backup:** Change Google drive backup settings. You can also check the backup account currently used, or add a new backup account.

## Restart & reset

You can reset the device including network and app settings.

- 1 On the settings screen, tap **General > Restart & reset**.
- 2 Customize the following settings:
  - **Auto-restart:** Automatically restart and optimize the phone at a set time. Tap ☐ to activate this feature. The device automatically restarts at a set time and optimize itself. Select a date and time for restart.



- You can set the device to restart itself once a week. The device automatically restarts in an hour from the preset time.
- Once the device restarts, notifications and badges are erased. Save important data before the preset time.
- The Auto-restart feature is not activated in the following situations: When the screen is turned on, when the device is in use, when the battery level is 30% or less, when the SIM card is locked, or when the device lock is activated while turning on the device.

- **Network settings reset:** Reset Wi-Fi, Bluetooth and other network settings.
- **Reset app preferences:** Reset the settings for an app. The data saved in the app will not be deleted.
- **Factory data reset:** Reset all settings for the device and delete data.



- Restarting and resetting your device deletes all data on it. Enter your device name, Google Account and other initial information again.

## About phone

You can view information about your device, such as the name, status, software details and legal information.

On the settings screen, tap **General > About phone** and view information.

## Regulatory & safety

You can view regulatory marks and related information on your device.

On the settings screen, tap **General > Regulatory & safety**.







05

## **Appendix**

# LG Language Settings

Select a language to use on your device.

- Tap  > **Settings** > **General** > **Language & keyboard** > **Language** > **ADD LANGUAGE**, and select a language.
  - Touch and hold  and drag it to the top of the language list to set it as a default language.

## LG Bridge

### LG Bridge overview

LG Bridge is an app that helps you manage the photos, music, videos and documents saved on your LG smartphone from your computer conveniently. You can back up contacts, photos and more to the computer or update the device software.




- The supported features may vary depending on the device.
- LG USB driver is a necessary program to connect your LG smartphone with the computer and is installed when you install LG Bridge.

### LG Bridge functions

- Manage the files on the device from a computer via Wi-Fi connection or mobile data connection.
- Back up data from the device to a computer or restore data from a computer to the device via USB cable connection.
- Update the device software from a computer via USB cable connection.

## Installing LG Bridge on a computer

- 1 Go to [www.lg.com/ca](http://www.lg.com/ca) from your computer.
- 2 Select your region and click .
- 3 In the search bar, enter the name of your device.
- 4 Click **Support > Software & Firmware**.
- 5 Download **LG BRIDGE** setup file.

## Phone software update

### LG Mobile phone software update from the Internet

For more information about using this function, please visit <http://www.lg.com/common/index.jsp>, select your country and language.

This feature allows you to conveniently update the firmware on your phone to a newer version from the Internet without needing to visit a service centre. This feature will only be available if and when LG makes a newer firmware version available for your device.

Because the mobile phone firmware update requires the user's full attention for the duration of the update process, please make sure you check all instructions and notes that appear at each step before proceeding. Please note that removing the USB cable during the upgrade may seriously damage your mobile phone.



- LG reserves the right to make firmware updates available only for selected models at its own discretion and does not guarantee the availability of the newer version of the firmware for all handset models.

## LG Mobile Phone software update via Over-the-Air (OTA)

This feature allows you to conveniently update your phone's software to a newer version via OTA, without connecting a USB cable. This feature will only be available if and when LG makes a newer firmware version available for your device.

To perform the phone software update, **Settings > General > Update centre > Software Update > Check now for update**.



- Your personal data from internal phone storage—including information about your Google Account and any other accounts, your system/application data and settings, any downloaded applications and your DRM licence—might be lost in the process of updating your phone's software. Therefore, LG recommends that you backup your personal data before updating your phone's software. LG does not take responsibility for any loss of personal data.
- This feature depends on the area or service provider.

# Anti-Theft Guide

Set up your device to prevent other people from using it if it's been reset to factory settings without your permission. For example, if your device is lost, stolen, or wiped, only someone with your Google Account or screen lock information can use the device.

All you need to make sure your device is protected is:

- Set a screen lock: If your device is lost or stolen but you have a screen lock set, the device can't be erased using the Settings menu unless your screen is unlocked.
- Add your Google Account on your device: If your device is wiped but you have your Google Account on it, the device can't finish the setup process until your Google Account information is entered again.

After your device is protected, you'll need to either unlock your screen or enter your Google Account password if you need to do a factory reset. This ensures that you or someone you trust is doing the reset.



- Do not forget your Google Account and password you had added to your device prior to performing a factory reset. If you can't provide the account information during the setup process, you won't be able to use the device at all after performing the factory reset.

# Open Source Software Notice Information

To obtain the source code under GPL, LGPL, MPL, and other open source licences, that is contained in this product, please visit <http://opensource.lge.com>.

In addition to the source code, all referred licence terms, warranty disclaimers and copyright notices are available for download.

LG Electronics will also provide open source code to you on CD-ROM for a charge covering the cost of performing such distribution (such as the cost of media, shipping, and handling) upon email request to [opensource@lge.com](mailto:opensource@lge.com).

This offer is valid for a period of three years after our last shipment of this product. This offer is valid to anyone in receipt of this information.

## Regulatory information(FCC/IC ID number, etc.)

For regulatory details, go to **Settings > General > Regulatory & safety**.

# Trademarks

- Copyright ©2019 LG Electronics, Inc. All rights reserved. LG and the LG logo are registered trademarks of LG Group and its related entities.
- Google, Google Map, Gmail, YouTube, Google Duo, Google Play, Android, Chrome, Google Photos, Google Play Protect, Google Calendar, Google Docs, Google Drive, Google Sheets and other related marks and logos are trademarks of Google LLC.
- Bluetooth® is a registered trademark of Bluetooth SIG, Inc. worldwide.
- Wi-Fi® and the Wi-Fi logo are registered trademarks of the Wi-Fi Alliance.
- All other trademarks and copyrights are the property of their respective owners.

## More information

### Tempered glass parts

Tempered glass parts of this device are not permanent and they may wear out over time.

- If you drop your device on a hard surface or subject it to severe impact, the tempered glass may be damaged.

If this happens, stop using your device immediately and contact an LG Customer Service Centre.

- You can purchase protective cases to protect your device from damage on the market.

Note that these protective cases are not covered under the warranty service provided by LG Electronics and safety is not guaranteed.

### Aspect ratio

Some downloaded apps may not support specific aspect ratio.

In this case, select the most optimal screen ratio for the app or consult the app provider for more information.

## Guide to data transfers

- For the data that can be exchanged between LG devices or between the LG device and a third party device, see the following table.

| Type            | Item details   | LG device<br>→<br>LG device | Third party<br>Android device<br>→<br>LG device | iOS device<br>→<br>LG device |
|-----------------|--|-----------------------------|---|------------------------------|
| Personal data   | Contacts, messages, dial logs, calendar, voice recordings                        | ○                           | ○   | ○                            |
|                 | Memos  | ○                           | X   | ○                            |
|                 | Alarms   | ○                           | X   | X                            |
| Media data      | Photos, videos, songs, documents   | ○                           | ○   | ○                            |
| Screen settings | Home screen settings (folders and widgets)                                       | ○                           | X   | X                            |
|                 | Lock screen settings (screen lock settings excluded)                             | ○                           | X   | X                            |
| Apps            | Downloaded apps  | ○                           | ○   | -                            |
|                 | Personal data of the downloaded app  | ○                           | X   |                              |
| Others          | Public certificate   | ○                           | ○   | X                            |
|                 | Settings (Wi-Fi, Bluetooth, Calls, sound & notification, accessibility, battery) | ○                           | X   | X                            |



- Some data may not be transmitted depending on the software version, app version, operating system, manufacturer or service provider's policy.



# FAQ

This chapter lists some problems you might encounter when using your device. Some problems require you to call your service provider, but most are easy to fix yourself.

## **SIM card error**

Make sure the SIM card is correctly inserted.

## **No network connection or dropped network**

Signal is weak. Move to a window or an open area.

You are outside the carrier network area. Move and check the network.

## **Calls are not available**

New network not authorized.

Make sure you have not set call barring for the incoming number.

Make sure you have not set call barring for the number you are dialling.

## **Device cannot be turned on**

When the battery is completely discharged, your device will not turn on.

Fully charge the battery before turning on the device.

## **Charging error**

Make sure device is charging at a normal temperature.

Check the charger and its connection to the device.

Use only in-box accessories which are authorized by LG.

## **The battery depletes faster than when first purchased**

When you expose the device or the battery to very cold or hot temperatures, the battery life may be reduced.

Battery consumption will increase when you use certain features or apps, such as GPS, games or the Internet.

The battery is consumable and the battery life will get shorter over time.

## **Error messages appear when launching the camera**

Charge the battery.

Free some memory by transferring files to a computer or deleting files from your device.

Restart the device.

If you are still having trouble with the camera app after trying these tips, contact an LG Electronics Service Centre.

## **The photo quality is poor**

The quality of your photos may vary, depending on the surroundings and the photography techniques you use.

If you take photos and videos, standard angle quality is better than wide-angle.

If you take photos in dark areas, at night or indoors, image noise may occur or images may be out of focus.

If you have any problems, reset the options.

## The touch screen responds slowly or incorrectly

If you attach a screen protector or optional accessories to the touch screen, the touch screen may not function properly.

If you are wearing gloves, if your hands are not clean while touching the touch screen or if you tap the screen with sharp objects or your fingertips, the touch screen may malfunction.

The touch screen may malfunction in humid conditions or when exposed to water.

Restart your device to clear any temporary software bugs.

If the touch screen is scratched or damaged, visit an LG Electronics Service Centre.

## Hangs or freezes

### Restart the device

- If your device freezes or hangs, you may need to close apps or turn the device off and then on again.

### Perform a boot-up

- A soft reset may be used to reset the device if the screen freezes, or the buttons, touch screen or device are no longer responding.
- To perform a soft reset of your device, simply press and hold the Volume Down and Power keys until the device restarts.

### Reset the device

- If the methods above do not solve your problem, perform a factory data reset.
- On the settings screen, tap **General > Restart & reset > Factory data reset**.
  - This method resets all settings for the device and deletes data. Before performing the factory data reset, remember to make back-up copies of all important data stored in the device.
  - If you registered a Google Account to the device, you must sign in to the same Google Account after resetting the device.

## **Bluetooth device is not located**

Make sure the Bluetooth wireless feature is activated on your device.

Make sure the Bluetooth wireless feature is activated on the device you wish to connect to.

Make sure your device and the other Bluetooth device are within the maximum Bluetooth range (10 m).

If the tips above do not solve your problem, contact an LG Electronics Service Centre.

## **A connection is not established when you connect the device to a computer**

Make sure the USB cable you are using is compatible with your device.

Make sure you have the proper driver installed and updated on your computer.

## **Downloaded application causes a lot of errors**

Application has problems.

Remove and reinstall the application.



06

**For Your Safety**

## Important Information

This user guide contains important information on the use and operation of this phone. Please read all the information carefully for optimal performance and to prevent any damage to or misuse of the phone. Any changes or modifications not expressly approved in this user guide could void your warranty for this equipment.

## Before You Start

### Safety Instructions



- To reduce the possibility of electric shock, do not expose your phone to high humidity areas, such as the bathroom, swimming pool, etc.

**Always store your phone away from heat.** Never store your phone in settings that may expose it to temperatures less than 32°F (0°C) or greater than 104 °F (40 °C), such as outside during extreme weather conditions or in your car on a hot day. Exposure to excessive cold or heat will result in malfunction, damage and/or catastrophic failure.

**Be careful when using your phone near other electronic devices.** RF emissions from your mobile phone may affect nearby inadequately shielded electronic equipment. You should consult with manufacturers of any personal medical devices such as pacemakers and hearing aides to determine if they are susceptible to interference from your mobile phone. Turn off your phone in a medical facility or at a gas station. Never place your phone in a microwave oven as this will cause the battery to explode.

## Safety Information

Read these simple guidelines. Breaking the rules may be dangerous or illegal. Further detailed information is given in this user guide.

- Never place your phone in a microwave oven as it will cause the battery to explode.
- Your phone contains an internal battery. Do not dispose of your battery by fire or with hazardous or flammable materials.
- Make sure that no sharp-edged items come into contact with the battery. There is a risk of this causing a fire.
- Be careful that children do not swallow any parts such as rubber plugs (earphone, connection parts of the phone, etc.). This could cause asphyxiation or suffocation.
- Unplug the power cord and charger during lightning storms to avoid electric shock or fire.
- When riding in a car, do not leave your phone or set up the hands-free kit near the air bag. If wireless equipment is improperly installed and the air bag is activated, you may be seriously injured.
- Do not use a hand-held phone while driving.
- Do not use the phone in areas where its use is prohibited. (For example: aircraft).
- Do not expose the battery charger or adapter to direct sunlight or use it in places with high humidity, such as a bathroom.
- Never store your phone in temperatures less than -4°F (-20°C) or greater than 122°F (50°C).
- Do not use harsh chemicals (such as alcohol, benzene, thinners, etc.) or detergents to clean your phone. There is a risk of this causing a fire.
- Do not drop, strike, or shake your phone severely. Such actions may harm the internal circuit boards of the phone.
- Do not use your phone in high explosive areas as the phone may generate sparks.
- Do not damage the power cord by bending, twisting, pulling, or heating.
- Do not use the plug if it is loose as it may cause a fire or electric shock.
- Do not place any heavy items on the power cord. Do not allow the power cord to be crimped as it may cause a fire or electric shock.

- Do not handle the phone with wet hands while it is being charged. It may cause an electric shock or seriously damage your phone.
- Do not disassemble the phone.
- Do not place or answer calls while charging the phone as it may short-circuit the phone and/or cause an electric shock or fire.
- Only use the batteries, antennas, and chargers provided by LG. The warranty will not be applied to products provided by other suppliers.
- Only authorized personnel should service the phone and its accessories. Faulty installation or service may result in accidents and consequently invalidate the warranty.
- Do not hold or let the antenna come in contact with your body during a call.
- An emergency call can be made only within a service area. For an emergency call, make sure that you are within a service area and that the phone is turned on.
- Use accessories, such as earphones and headsets, with caution. Ensure that cables are tucked away safely and do not touch the antenna unnecessarily.
- A mobile device requires proper air circulation in order to dissipate heat. Direct skin contact and inadequate circulation of air flow to the device may cause the device to overheat. The device must be at least 1.0 cm (0.39 inches) from between the user's body.
- Prevent dust or any other foreign substances from getting into the Charger/USB cable port. It may cause heat or a fire.



# FCC RF Exposure Information



- Read this information before operating the phone.

In August 1996, the Federal Communications Commission (FCC) of the United States, with its action in Report and Order FCC 96-326, adopted an updated safety standard for human exposure to radio frequency (RF) electromagnetic energy emitted by FCC regulated transmitters. Those guidelines are consistent with the safety standard previously set by both U.S. and international standards bodies.

The design of this phone complies with the FCC guidelines and these international standards.

## Body-worn Operation

This device was tested for typical body-worn operations with the back of the phone kept 1 cm (0.39 inches) between the user's body and the back of the phone. To comply with FCC/ISED RF exposure requirements, a minimum separation distance of 1 cm (0.39 inches) must be maintained between the user's body and the back of the phone. Any belt-clips, holsters, and similar accessories containing metallic components may not be used. Body-worn accessories that cannot maintain 1 cm (0.39 inches) separation distance between the user's body and the back of the phone, and have not been tested for typical bodyworn operations may not comply with FCC/ISED RF exposure limits and should be avoided.

## FCC Part 15 Class B Compliance

This device complies with part 15 of FCC rules and ISDEC licence-exempt RSS standard(s).

Operation is subject to the following two conditions:

- (1) this device may not cause interference, and
- (2) this device must accept any interference, including interference that may cause undesired operation of the device.

## Part 15.105 statement

This equipment has been tested and found to comply with the limits for a class B digital device, pursuant to Part 15 of the FCC rules. These limits are designed to provide reasonable protection against harmful interference in a residential installation. This equipment generates, uses, and can radiate radio frequency energy and, if not installed and used in accordance with the instructions, may cause harmful interference with radio communications. However, there is no guarantee that interference will not occur in a particular installation. If this equipment does cause harmful interference or television reception, which can be determined by turning the equipment off and on, you can try to correct the interference by one or more of the following measures:

- Reorient or relocate the receiving antenna.
- Increase the separation between the equipment and receiver.
- Connect the equipment into an outlet on a circuit different from that to which the receiver is connected.
- Consult the dealer or an experienced radio/TV technician for help.

## Cautions for Battery

- Do not disassemble.
- Do not short-circuit.
- Do not expose to high temperature: 140°F (60°C).
- Do not incinerate.

## Battery Disposal

- Please dispose of your battery properly or bring it to your local wireless carrier for recycling.
- Your phone contains an internal battery. Do not dispose of your battery by fire or with hazardous or flammable materials.

## Adapter (Charger) Cautions

- Using the wrong battery charger could damage your phone and void your warranty.
- The adapter or battery charger is intended for indoor use only.
- Do not expose the adapter or battery charger to direct sunlight or use it in places with high humidity, such as the bathroom.

## Avoid damage to your hearing

- Damage to your hearing can occur if you are exposed to loud sounds for long periods of time. We therefore recommend that you do not turn on or off the handset close to your ear. We also recommend that music and call volumes are set to a reasonable level.
- If you are listening to music whilst out and about, please ensure that the volume is at a reasonable level so that you are aware of your surroundings. This is particularly imperative when attempting to cross the street.

## TIA Safety Information

Provided herein is the complete TIA Safety Information for Wireless Handheld phones. Inclusion of the text covering Pacemakers, Hearing Aids, and Other Medical Devices is required in the owner's manual for CTIA Certification. Use of the remaining TIA language is encouraged when appropriate.

## Exposure to Radio Frequency Signal

Your wireless handheld portable telephone is a low power radio transmitter and receiver. When it is ON, it receives and also sends out radio frequency (RF) signals. In August, 1996, the Federal Communications Commissions (FCC) adopted RF exposure guidelines with safety levels for handheld wireless phones.

Those guidelines are consistent with the safety standards previously set by both U.S. and international standards bodies:

ANSI C95.1 (1992) \*

NCRP Report 86 (1986)

ICNIRP (1996)

Those standards were based on comprehensive and periodic evaluations of the relevant scientific literature. For example, over 120 scientists, engineers, and physicians from universities, government health agencies, and industry reviewed the available body of research to develop the ANSI Standard (C95.1).

\* American National Standards Institute; National Council on Radiation Protection and Measurements; International Commission on Non-Ionizing Radiation Protection

The design of your phone complies with the FCC guidelines (and those standards).

## Phone Operation

**NORMAL POSITION:** Hold the phone as you would any other telephone with the antenna pointed up and over your shoulder.

## Driving

Check the laws and regulations on the use of wireless phones in the areas where you drive. Always obey them. Also, if using your phone while driving, please:

- Give full attention to driving: driving safely is your first responsibility;
- Use hands-free operation, if available;
- Pull off the road and park before making or answering a call if driving conditions so require.

## Electronic Devices

Most modern electronic equipment is shielded from RF signals.

However, certain electronic equipment may not be shielded against the RF signals from your wireless phone.

## Pacemakers

The Health Industry Manufacturers Association recommends that a minimum separation of 15 cm (6 inches) be maintained between a handheld wireless phone and a pacemaker to avoid potential interference with the pacemaker. These recommendations are consistent with the independent research by and recommendations of Wireless Technology Research. Persons with pacemakers:

- Should ALWAYS keep the phone more than 15 cm (6 inches) from their pacemaker when the phone is turned ON;
- Should not carry the phone in a breast pocket.
- Should use the ear opposite the pacemaker to minimize the potential for interference.
- If you have any reason to suspect that interference is taking place, turn your phone OFF immediately.

## Hearing Aids

Some digital wireless phones may interfere with some hearing aids. In the event of such interference, you may want to consult your service provider.

## Other Medical Devices

If you use any other personal medical device, consult the manufacturer of your device to determine if they are adequately shielded from external RF energy. Your physician may be able to assist you in obtaining this information.

## Health Care Facilities

Turn your phone OFF in health care facilities when any regulations posted in these areas instruct you to do so. Hospitals or health care facilities may use equipment that could be sensitive to external RF energy.

## Vehicles

RF signals may affect improperly installed or inadequately shielded electronic systems in motor vehicles. Check with the manufacturer or its representative regarding your vehicle.

You should also consult the manufacturer of any equipment that has been added to your vehicle.

## Posted Facilities

Turn your phone OFF in any facility where posted notices so require.

## Aircraft

FCC regulations prohibit using your phone while in the air. Turn your phone OFF before boarding an aircraft.

## Blasting Areas

To avoid interfering with blasting operations, turn your phone OFF when in a blasting area or in areas posted: 'Turn off two-way radio' Obey all signs and instructions.

## Potentially Explosive Atmosphere

Turn your phone OFF when in any area with a potentially explosive atmosphere and obey all signs and instructions. Sparks in such areas could cause an explosion or fire resulting in bodily injury or even death.

Areas with a potentially explosive atmosphere are often, but not always, marked clearly. Potential areas may include: fueling areas (such as gasoline stations); below deck on boats; fuel or chemical transfer or storage facilities; vehicles using liquefied petroleum gas (such as propane or butane); areas where the air contains chemicals or particles (such as grain, dust, or metal powders); and any other area where you would normally be advised to turn off your vehicle engine.

## For Vehicles Equipped with an Air Bag

An air bag inflates with great force. DO NOT place objects, including either installed or portable wireless equipment, in the area over the air bag or in the air bag deployment area. If in-vehicle wireless equipment is improperly installed and the air bag inflates, serious injury could result.

## Safety Information

Please read and observe the following information for safe and proper use of your phone and to prevent damage. Also, keep the user guide in an accessible place at all times after reading it.

## Charger and Adapter Safety

The charger and adapter are intended for indoor use only.

## Battery Information and Care

- Please dispose of your battery properly or take it to your local wireless carrier for recycling.
- The battery does not need to be fully discharged before recharging.
- Use only LG-approved chargers specific to your phone model since they are designed to maximize battery life.
- Do not disassemble or impact the battery as it may cause electric shock, short-circuit, and fire. Store the battery in a place out of reach of children.
- Replace the battery when it no longer provides acceptable performance. The battery can be recharged several hundred times before replacement.

- Recharge the battery after long periods of non-use to maximize battery life.
- Battery life will vary due to usage patterns and environmental conditions.
- Use of extended backlighting, Media Net Browsing, and data connectivity kits affect battery life and talk/standby times.
- Actual battery life will depend on network configuration, product settings, usage patterns, battery and environmental conditions.
- Always unplug the charger from the wall socket after the phone is fully charged to save unnecessary power consumption of the charger.



### **Notice for Battery replacement**

- Li-Ion Battery is a hazardous component which can cause injury.
- Battery replacement by a non-qualified professional can cause damage to your device.
- Your device has an internal battery. For your safety, do not remove the back cover. If you need to replace the battery, take it to the nearest authorized LG Electronics service point or dealer for assistance.

## **Explosion, Shock, and Fire Hazards**

- Do not put your phone in a place subject to excessive dust and keep the minimum required distance between the power cord and heat sources.
- Unplug the power cord prior to cleaning your phone, and clean the power plug pin when it is dirty.
- When using the power plug, ensure that it is firmly connected. If it is not, it may cause excessive heat or fire.
- If you put your phone in a pocket or bag without covering the receptacle of the phone (power plug pin), metallic articles (such as a coin, paperclip or pen) may shortcircuit the phone. Always cover the receptacle when not in use.
- Do not short-circuit the battery. Metallic articles such as a coin, paperclip or pen in your pocket or bag may short-circuit the + and – terminals of the battery (metal strips on the battery) upon moving. Short-circuiting of the terminal may damage the battery and cause an explosion.



## General Notice

- Using a damaged battery or placing a battery in your mouth may cause serious injury.
- Do not place items containing magnetic components such as a credit card, phone card, bank book or subway ticket near your phone. The magnetism of the phone may damage the data stored in the magnetic strip.
- Talking on your phone for a long period of time may reduce call quality due to heat generated during use.
- When the phone is not used for a long period time, store it in a safe place with the power cord unplugged.
- Using the phone in proximity to receiving equipment (i.e., TV or radio) may cause interference to the phone.
- Do not immerse your phone in water. If this happens, turn it off immediately. If the phone does not work, take it to an LG Authorized Service Centre.
- Do not paint your phone.
- The data saved in your phone might be deleted due to careless use, repair of the phone, or upgrade of the software. Please backup your important phone numbers. (Ring tones, text messages, voice messages, pictures, and videos could also be deleted.) The manufacturer is not liable for damage due to the loss of data.
- When you use the phone in public places, set the ring tone to vibration so as not to disturb others.
- Do not turn your phone on or off when putting it near your ear.
- Your phone is an electronic device that generates heat during normal operation. Extremely prolonged, direct skin contact in the absence of adequate ventilation may result in discomfort or minor burns. Therefore, use care when handling your phone during or immediately after operation.
- Do not attempt to repair or modify the device yourself. Your device is equipped with an internal rechargeable battery which should be replaced only by LG or an authorized LG repair centre. You should never attempt to open or disassemble this device yourself and doing so may cause damage that will void your warranty.
- Please ensure that the product does not get in contact with liquid. Do not use or recharge the product if it is wet. Once the product becomes wet, the liquid damage indicator changes colour. Please note that this will limit you from receiving any free-of-charge repair services provided under warranty.

# FDA Consumer Update

The U.S. Food and Drug Administration Centre for Devices and Radiological Health  
Consumer Update on Mobile Phones.

## 1. Do wireless phones pose a health hazard?

The available scientific evidence does not show that any health problems are associated with using wireless phones. There is no proof, however, that wireless phones are absolutely safe. Wireless phones emit low levels of radio frequency energy (RF) in the microwave range while being used. They also emit very low levels of RF when in the standby mode. Whereas high levels of RF can produce health effects (by heating tissue), exposure to low level RF that does not produce heating effects causes no known adverse health effects. Many studies of low level RF exposures have not found any biological effects. Some studies have suggested that some biological effects may occur, but such findings have not been confirmed by additional research. In some cases, other researchers have had difficulty in reproducing those studies, or in determining the reasons for inconsistent results.

## 2. What is the FDA's role concerning the safety of wireless phones?

Under the law, the FDA does not review the safety of radiation emitting consumer products such as wireless phones before they can be sold, as it does with new drugs or medical devices. However, the agency has authority to take action if wireless phones are shown to emit radio frequency energy (RF) at a level that is hazardous to the user. In such a case, the FDA could require the manufacturers of wireless phones to notify users of the health hazard and to repair, replace, or recall the phones so that the hazard no longer exists. Although the existing scientific data do not justify FDA regulatory actions, the FDA has urged the wireless phone industry to take a number of steps, including the following:

- Support needed research into possible biological effects of RF of the type emitted by wireless phones;
- Design wireless phones in a way that minimizes any RF exposure to the user that is not necessary for device function; and
- Cooperate in providing of wireless phones with the best possible information on possible effects of wireless phone use on human health.

The FDA belongs to an interagency working group of the federal agencies that have responsibility for different aspects of RF safety to ensure coordinated efforts at the federal level. The following agencies belong to this working group:

- National Institute for Occupational Safety and Health
- Environmental Protection Agency
- Occupational Safety and Health Administration (Administración de la seguridad y salud laborales)
- Occupational Safety and Health Administration
- National Telecommunications and Information Administration

The National Institutes of Health participates in some interagency working group activities, as well.

The FDA shares regulatory responsibilities for wireless phones with the Federal Communications Commission (FCC). All phones that are sold in the United States must comply with FCC safety guidelines that limit RF exposure. The FCC relies on the FDA and other health agencies for safety questions about wireless phones. The FCC also regulates the base stations that the wireless phone networks rely upon. While these base stations operate at higher power than the wireless phones themselves, the RF exposures that people get from these base stations are typically thousands of times lower than those they can get from wireless phones. Base stations are thus not the subject of the safety questions discussed in this document.

### **3. What kinds of phones are the subject of this update?**

The term 'wireless phone' refers here to handheld wireless phones with built-in antennas, often called 'cell,' 'mobile,' or 'PCS' phones. These types of wireless phones can expose the user to measurable radiofrequency energy (RF) because of the short distance between the phone and the user's head. These RF exposures are limited by FCC safety guidelines that were developed with the advice of the FDA and other federal health and safety agencies. When the phone is located at greater distances from the user, the exposure to RF is drastically lower because a person's RF exposure decreases rapidly with increasing distance from the source. The so-called 'cordless phones,' which have a base unit connected to the telephone wiring in a house, typically operate at far lower power levels, and thus produce RF exposures far below the FCC safety limits.

## **4. What are the results of the research done already?**

The research done thus far has produced conflicting results, and many studies have suffered from flaws in their research methods. Animal experiments investigating the effects of radiofrequency energy (RF) exposures characteristic of wireless phones have yielded conflicting results that often cannot be repeated in other laboratories. A few animal studies, however, have suggested that low levels of RF could accelerate the development of cancer in laboratory animals. However, many of the studies that showed increased tumor development used animals that had been genetically engineered or treated with cancer causing chemicals so as to be predisposed to develop cancer in the absence of RF exposure. Other studies exposed the animals to RF for up to 22 hours per day. These conditions are not similar to the conditions under which people use wireless phones, so we don't know with certainty what the results of such studies mean for human health. Three large epidemiology studies have been published since December 2000. Between them, the studies investigated any possible association between the use of wireless phones and primary brain cancer, glioma, meningioma, or acoustic neuroma, tumors of the brain or salivary gland, leukemia, or other cancers. None of the studies demonstrated the existence of any harmful health effects from wireless phone RF exposures.

However, none of the studies can answer questions about long-term exposures, since the average period of phone use in these studies was around three years.

## **5. What research is needed to decide whether RF exposure from wireless phones poses a health risk?**

A combination of laboratory studies and epidemiological studies of people actually using wireless phones would provide some of the data that are needed. Lifetime animal exposure studies could be completed in a few years. However, very large numbers of animals would be needed to provide reliable proof of a cancer promoting effect if one exists. Epidemiological studies can provide data that is directly applicable to human populations, but 10 or more years follow-up may be needed to provide answers about some health effects, such as cancer. This is because the interval between the time of exposure to a cancer-causing agent and the time tumors develop - if they do may be many, many years. The interpretation of epidemiological studies is hampered by difficulties in measuring actual RF exposure during day-to-day use of wireless phones. Many factors affect this measurement, such as the angle at which the phone is held, or which model of phone is used.

## **6. What is the FDA doing to find out more about the possible health effects of wireless phone RF?**

The FDA is working with the U.S. National Toxicology Program and with groups of investigators around the world to ensure that high priority animal studies are conducted to address important questions about the effects of exposure to radiofrequency energy (RF). The FDA has been a leading participant in the World Health Organization International Electromagnetic Fields (EMF) Project since its inception in 1996. An influential result of this work has been the development of a detailed agenda of research needs that has driven the establishment of new research programs around the world. The project has also helped develop a series of public information documents on EMF issues. The FDA and the Cellular Telecommunications & Internet Association (CTIA) have a formal Cooperative Research and Development Agreement (CRADA) to do research on wireless phone safety. The FDA provides the scientific oversight, obtaining input from experts in government, industry, and academic organizations. CTIA funded research is conducted through contracts with independent investigators. The initial research will include both laboratory studies and studies of wireless phone users. The CRADA will also include a broad assessment of additional research needs in the context of the latest research developments around the world.

## **7. How can I find out how much radiofrequency energy exposure I can get by using my wireless phone?**

All phones sold in the United States must comply with Federal Communications Commission (FCC) guidelines that limit radiofrequency energy (RF) exposures. The FCC/ISED established these guidelines in consultation with the FDA and the other federal health and safety agencies. The FCC/ISED limit for RF exposure from wireless telephones is set at a Specific Absorption Rate (SAR) of 1.6 watts per kilogram (1.6 W/kg). The FCC/ISED limit is consistent with the safety standards developed by the Institute of Electrical and Electronic Engineering (IEEE) and the National Council on Radiation Protection and Measurement. The exposure limit takes into consideration the body's ability to remove heat from the tissues that absorb energy from the wireless phone and is set well below levels known to have effects. Manufacturers of wireless phones must report the RF exposure level for each model of phone to the FCC/ISED. The FCC website (<http://www.fcc.gov/oet/rfsafety>) gives directions for locating the FCC identification number on your phone so you can find your phone's RF exposure level in the online listing.

## **8. What has the FDA done to measure the radiofrequency energy coming from wireless phones?**

The Institute of Electrical and Electronic Engineers (IEEE) is developing a technical standard for measuring the radiofrequency energy (RF) exposure from wireless phones and other wireless handsets with the participation and leadership of FDA scientists and engineers. The standard, 'Recommended Practice for Determining the Spatial-Peak Specific Absorption Rate (SAR) in the Human Body Due to Wireless Communications Devices: Experimental Techniques,' sets forth the first consistent test methodology for measuring the rate at which RF is deposited in the heads of wireless phone users. The test method uses a tissue simulating model of the human head. Standardized SAR test methodology is expected to greatly improve the consistency of measurements made at different laboratories on the same phone. SAR is the measurement of the amount of energy absorbed in tissue, either by the whole body or a small part of the body. It is measured in watts/kg (or milliwatts/g) of matter. This measurement is used to determine whether a wireless phone complies with safety guidelines.

## **9. What steps can I take to reduce my exposure to radiofrequency energy from my wireless phone?**

If there is a risk from these products - and at this point we do not know that there is - it is probably very small. But if you are concerned about avoiding even potential risks, you can take a few simple steps to minimize your exposure to radiofrequency energy (RF). Since time is a key factor in how much exposure a person receives, reducing the amount of time spent using a wireless phone will reduce RF exposure. If you must conduct extended conversations by wireless phone every day, you could place more distance between your body and the source of the RF, since the exposure level drops off dramatically with distance. For example, you could use a headset and carry the wireless phone away from your body or use a wireless phone connected to a remote antenna. Again, the scientific data does not demonstrate that wireless phones are harmful. But if you are concerned about the RF exposure from these products, you can use measures like those described above to reduce your RF exposure from wireless phone use.

## **10. What about children using wireless phones?**

The scientific evidence does not show a danger to users of wireless phones, including children and teenagers. If you want to take steps to lower exposure to radiofrequency energy (RF), the measures described above would apply to children and teenagers using wireless phones. Reducing the time of wireless phone use and increasing the distance between the user and the RF source will reduce RF exposure. Some groups sponsored by other national governments have advised that children be discouraged from using wireless phones at all. For example, the government in the United Kingdom distributed leaflets containing such a recommendation in December 2000. They noted that no evidence exists that using a wireless phone causes brain tumors or other ill effects. Their recommendation to limit wireless phone use by children was strictly precautionary; it was not based on scientific evidence that any health hazard exists.

## **11. What about wireless phone interference with medical equipment?**

Radiofrequency energy (RF) from wireless phones can interact with some electronic devices. For this reason, the FDA helped develop a detailed test method to measure electromagnetic interference (EMI) of implanted cardiac pacemakers and defibrillators from wireless telephones. This test method is now part of a standard sponsored by the Association for the Advancement of Medical instrumentation (AAMI). The final draft, a joint effort by the FDA, medical device manufacturers, and many other groups, was completed in late 2000. This standard will allow manufacturers to ensure that cardiac pacemakers and defibrillators are safe from wireless phone EMI. The FDA has tested hearing aids for interference from handheld wireless phones and helped develop a voluntary standard sponsored by the Institute of Electrical and Electronic Engineers (IEEE). This standard specifies test methods and performance requirements for hearing aids and wireless phones so that no interference occurs when a person uses a 'compatible' phone and a 'compatible' hearing aid at the same time. This standard was approved by the IEEE in 2000. The FDA continues to monitor the use of wireless phones for possible interactions with other medical devices. Should harmful interference be found to occur, the FDA will conduct testing to assess the interference and work to resolve the problem.

## 12. Where can I find additional information?

Innovation, Science and Economic Development Canada

(<https://www.ic.gc.ca/eic/site/smt-gst.nsf/eng/sf09583.html>)

For additional information, please refer to the following resources: FDA web page on wireless phones (<http://www.fda.gov/>)

Federal Communications Commission (FCC) RF Safety Program

(<http://www.fcc.gov/oet/rfsafety>)

International Commission on Non-Ionizing Radiation Protection

(<http://www.icnirp.org>)

World Health Organization (WHO) International EMF Project

(<http://www.who.int/emf>)

National Radiological Protection Board (UK)

(<http://www.nrpb.org.uk/>)

## 10 Driver Safety Tips

Your wireless phone gives you the powerful ability to communicate by voice almost anywhere, anytime. An important responsibility accompanies the benefits of wireless phones, one that every user must uphold. When operating a car, driving is your first responsibility.

When using your wireless phone behind the wheel of a car, practice good common sense and remember the following tips:

1. Get to know your wireless phone and its features such as speed dial and redial. Carefully read your instruction manual and learn to take advantage of valuable features most phones offer, including automatic redial and memory. Also, work to memorize the phone keypad so you can use the speed dial function without taking your attention off the road.
2. When available, use a handsfree device. A number of handsfree wireless phone accessories are readily available today. Whether you choose an installed mounted device for your wireless phone or a speaker phone accessory, take advantage of these devices if available to you.
3. Position your wireless phone within easy reach. Make sure you place your wireless phone within easy reach and where you can reach it without removing your eyes from the road. If you get an incoming call at an inconvenient time, if possible, let your voicemail answer it for you.



4. Suspend conversations during hazardous driving conditions or situations. Let the person you are speaking with know you are driving; if necessary, suspend the call in heavy traffic or hazardous weather conditions. Rain, sleet, snow and ice can be hazardous, but so is heavy traffic. As a driver, your first responsibility is to pay attention to the road.
5. Do not take notes or look up phone numbers while driving. If you are reading an address book or business card, or writing a “to-do” list while driving a car, you are not watching where you are going. It is common sense. Don’t get caught in a dangerous situation because you are reading or writing and not paying attention to the road or nearby vehicles.
6. Dial sensibly and assess the traffic; if possible, place calls when you are not moving or before pulling into traffic. Try to plan your calls before you begin your trip or attempt to coincide your calls with times you may be stopped at a stop sign, red light or otherwise stationary. But if you need to dial while driving, follow this simple tip – dial only a few numbers, check the road and your mirrors, then continue.
7. Do not engage in stressful or emotional conversations that may be distracting. Stressful or emotional conversations and driving do not mix; they are distracting and even dangerous when you are behind the wheel of a car. Make people you are talking with aware you are driving and if necessary, suspend conversations which have the potential to divert your attention from the road.
8. Use your wireless phone to call for help. Your wireless phone is one of the greatest tools you can own to protect yourself and your family in dangerous situations – with your phone at your side, help is only three numbers away. Dial 911 or other local emergency number in the case of fire, traffic accident, road hazard or medical emergency. Remember, it is a free call on your wireless phone!
9. Use your wireless phone to help others in emergencies. Your wireless phone provides you a perfect opportunity to be a “Good Samaritan” in your community. If you see an auto accident, crime in progress or other serious emergency where lives are in danger, call 911 or other local emergency number, as you would want others to do for you.
10. Call roadside assistance or a special wireless nonemergency assistance number when necessary. Certain situations you encounter while driving may require attention, but are not urgent enough to merit a call for emergency services. But you can still use your wireless phone to lend a hand. If you see a broken-down vehicle posing no serious hazard, a broken traffic signal, a minor traffic accident where no one appears injured or a vehicle you know to be stolen, call roadside assistance or other special non-emergency wireless number.

For more information, please call 888- 901 -SAFE.

## Consumer Information on SAR (Specific Absorption Rate)

### **This Model Phone Meets the Government's Requirements for Exposure to Radio Waves.**

Your wireless phone is a radio transmitter and receiver. It is designed and manufactured not to exceed the emission limits for exposure to radiofrequency (RF) energy set by the Federal Communications Commission (FCC) of the U.S. Government. These limits are part of comprehensive guidelines and establish permitted levels of RF energy for the general population. The guidelines are based on standards that were developed by independent scientific organizations through periodic and thorough evaluation of scientific studies. The standards include a substantial safety margin designed to assure the safety of all persons, regardless of age and health.

The exposure standard for wireless mobile phones employs a unit of measurement known as the Specific Absorption Rate, or SAR. The SAR limit set by the FCC is 1.6 W/kg. \* Tests for SAR are conducted using standard operating positions specified by the FCC with the phone transmitting at its highest certified power level in all tested frequency bands.

Although SAR is determined at the highest certified power level, the actual SAR level of the phone while operating can be well below the maximum value. Because the phone is designed to operate at multiple power levels to use only the power required to reach the network, in general, the closer you are to a wireless base station antenna, the lower the power output.

Before a phone model is available for sale to the public, it must be tested and certified to the FCC that it does not exceed the limit established by the government adopted requirement for safe exposure. The tests are performed in positions and locations (e.g., at the ear and worn on the body) as required by the FCC for each model.

While there may be differences between SAR levels of various phones and at various positions, they all meet the government requirement for safe exposure.

The FCC has granted an Equipment Authorization for this model phone with all reported SAR levels evaluated as in compliance with the FCC RF emission guidelines. SAR information on this model phone is on file with the FCC and can be found under the Display Grant section of <http://www.fcc.gov/oet/ea/fccid> after searching on FCC ID: ZNFL322DL.

Additionally, the highest SAR values can also be found on the LG website:  
<https://www.lg.com/global/support/sar/sar>.

Additional information on Specific Absorption Rates (SAR) can be found on the Cellular Telecommunications Industry Association (CTIA) website at <http://www.ctia.org/>

\* In the United States and Canada, the SAR limit for mobile phones used by the public is 1.6 watts/kg (W/kg) averaged over one gram of tissue. The standard incorporates a substantial margin of safety to give additional protection for the public and to account for any variations in measurements.

\* Product meets current FCC & ISED Radio Frequency Exposure Guidelines.

FCC ID: ZNFL322DL

IC: 2703C-X320WM

## **Precautions when using SIM cards**

- Do not insert the SIM card into the device with the label or seal attached. This may cause damage.
- Do not remove the SIM card while using the device. This may damage the SIM card or the system.
- Take extra care to ensure that the SIM card is not scratched, bent, or damaged by magnet. This may delete files saved on the SIM card or cause device malfunctions.

## **Precautions when using memory cards**

- Make sure that the orientation is correct when inserting the memory card.
- Inserting using the wrong orientation may damage the card.



07

**LIMITED  
WARRANTY**

# LIMITED WARRANTY STATEMENT

ARBITRATION NOTICE: THIS LIMITED WARRANTY CONTAINS AN ARBITRATION PROVISION THAT REQUIRES YOU AND LG TO RESOLVE DISPUTES BY BINDING ARBITRATION INSTEAD OF IN COURT, UNLESS THE LAWS OF YOUR PROVINCE OR TERRITORY DO NOT PERMIT THAT, OR, IN OTHER JURISDICTIONS, IF YOU CHOOSE TO OPT OUT. IN ARBITRATION, CLASS ACTIONS AND JURY TRIALS ARE NOT PERMITTED. PLEASE SEE THE SECTION TITLED “PROCEDURE FOR RESOLVING DISPUTES” BELOW.

## Warranty Laws

In the United States, the following laws govern warranties that arise in retail sales of consumer goods:

- The California Song-Beverly Consumer Warranty Act [CC §§1790 et seq],
- The California Uniform Commercial Code, Division Two [Com C §§2101 et seq], and
- The federal Magnuson-Moss Warranty Federal Trade Commission Improvement Act [15 USC §§2301 et seq; 16 CFR Parts 701 – 703]. A typical Magnuson-Moss Act warranty is a written promise that the product is free of defects or a written promise to refund, repair, or replace defective goods. [See 15 USC §2301(6).] Remedies include damages for failing to honor a written warranty or service contract or for violating disclosure provisions. [See 15 USC §2310(d).] Except for some labeling and disclosure requirements, the federal Act does not preempt state law. [See 15 USC §2311.]

In Canada, the consumer protection, business practices and/or sale of goods laws of your provincial jurisdiction of residence govern warranties that arise in retail sales of consumer goods. In addition, the Canadian Consumer Product Safety Act applies to product safety.

## 1. WHAT THIS WARRANTY COVERS:

LG offers you a limited warranty that the enclosed subscriber unit and its enclosed accessories will be free from defects in material and workmanship, according to the following terms and conditions:

1. The limited warranty for the product extends for ONE (1) year beginning on the date of purchase of the product by the original end user.
2. The limited warranty extends only to the original end user of the product and is not assignable or transferable to any subsequent purchaser/end user.
3. This warranty is good only to the original end user of the product during the warranty period as long as it is in Canada.
4. Upon request from LG, the consumer must provide information to reasonably prove the date of purchase.
5. During the applicable warranty period, LG will repair or replace at LG's sole option, without charge to the original end user, any defective component part of the phone or accessory.
6. LG may use rebuilt, reconditioned or new parts or components when repairing any product or replace a product with a rebuilt, reconditioned or new product.

## 2. WHAT THIS WARRANTY DOES NOT COVER:

1. Defects or damages resulting from use of the product in other than its normal and customary manner.
2. Defects or damages from abnormal use, abnormal conditions, improper storage, exposure to moisture or dampness, unauthorized modifications, unauthorized connections, unauthorized repair, misuse, neglect, abuse, accident, alteration, improper installation or other acts which are not the fault of LG, including damage caused by spills of food or liquids.
3. Breakage or damage to antennas unless caused directly by defects in material or workmanship.
4. The fact that the Customer Service Department at LG was not notified by the original end user of the alleged defect or malfunction of the product, during the warranty period.
5. Products which have had their serial numbers removed or made illegible.

6. Damage resulting from use of non-LG approved accessories.
7. All plastic surfaces and all other externally exposed parts that are scratched or damaged due to normal customer use.
8. Products serviced by non-authorized persons or companies.

## **Notes:**

1. This limited warranty supersedes all other warranties, expressed or implied either in fact or by operations of law, statutory or otherwise, including, but not limited to any implied warranty of merchantability or fitness for a particular purpose.
2. Shipping damage is the sole responsibility of the shipping company.

## **3. EXCLUSION OF LIABILITY:**

No other express warranty is applicable to this product.

THE DURATION OF ANY IMPLIED WARRANTIES, INCLUDING THE IMPLIED WARRANTY OF MARKETABILITY, IS LIMITED TO THE DURATION OF THE EXPRESS WARRANTY HEREIN. LG ELECTRONICS CANADA, INC. SHALL NOT BE LIABLE FOR THE LOSS OF THE USE OF THE PRODUCT, INCONVENIENCE, LOSS OR ANY OTHER DAMAGES, DIRECT OR CONSEQUENTIAL, ARISING OUT OF THE USE OF, OR INABILITY TO USE, THIS PRODUCT OR FOR ANY BREACH OF ANY EXPRESS OR IMPLIED WARRANTY, INCLUDING THE IMPLIED WARRANTY OF MARKETABILITY APPLICABLE TO THIS PRODUCT.

## **4. PROVINCIAL/TERRITORIAL LAW RIGHTS:**

No other express warranty is applicable to this product.

THE DURATION OF ANY IMPLIED WARRANTIES OR CONDITIONS, INCLUDING THE IMPLIED WARRANTY OR CONDITION OF MARKETABILITY OR MERCHANTABILITY OR FITNESS FOR A PARTICULAR PURPOSE, IS LIMITED TO THE DURATION OF THE EXPRESS WARRANTY HEREIN. LG SHALL NOT BE LIABLE FOR THE LOSS OF THE USE OF THE PRODUCT, INCONVENIENCE, LOSS OR ANY OTHER DAMAGES, DIRECT, INDIRECT OR CONSEQUENTIAL, ARISING OUT OF THE USE OF, OR INABILITY TO USE, THIS PRODUCT OR FOR ANY BREACH OF ANY EXPRESS OR IMPLIED WARRANTY OR CONDITION, INCLUDING THE IMPLIED WARRANTY OR CONDITION OF MARKETABILITY OR MERCHANTABILITY OR FITNESS FOR A PARTICULAR PURPOSE APPLICABLE TO THIS PRODUCT.



Some provinces or territories do not allow the exclusive limitation of incidental or consequential damages or limitations on how long an implied warranty lasts; so these limitations or exclusions may not apply to you. This warranty gives you specific legal rights and you may also have other rights which vary amongst provinces and territories.

## 5. HOW TO GET WARRANTY SERVICE:

To obtain warranty service, please call or fax to the following telephone number from anywhere in Canada: 1-888-542-2623

Otherwise, you may visit [http://www.lg.com/ca\\_en/support](http://www.lg.com/ca_en/support).

Correspondence may also be mailed to the following address: LG Electronics Service- Mobile Handsets, 20 Norelco Drive, North York, Ontario M9L 2X6

### **DO NOT RETURN YOUR PRODUCT TO THE ABOVE ADDRESS.**

Please call or write for the location of the LG authorized service centre nearest you and for the procedures for obtaining warranty claims.

## PROCEDURE FOR RESOLVING DISPUTES:

EXCEPT WHERE PROHIBITED AT LAW, ALL DISPUTES BETWEEN YOU AND LG ARISING OUT OF OR RELATING IN ANY WAY TO THIS LIMITED WARRANTY OR THE PRODUCT SHALL BE RESOLVED EXCLUSIVELY THROUGH BINDING ARBITRATION, AND NOT IN A COURT OF GENERAL JURISDICTION. EXCEPT WHERE PROHIBITED AT LAW, YOU AND LG BOTH IRREVOCABLY AGREE TO WAIVE THE RIGHT TO A JURY TRIAL AND TO BRING OR PARTICIPATE IN A CLASS ACTION.

Definitions. For the purposes of this section, references to "LG" mean LG Electronics Canada, Inc., its parents, subsidiaries and affiliates, and each of their officers, directors, employees, agents, beneficiaries, predecessors in interest, successors, assigns and suppliers; references to "dispute" or "claim" shall include any dispute, claim or controversy of any kind whatsoever (whether based in contract, tort, statute, regulation, ordinance, fraud, misrepresentation or any other legal or equitable theory) arising out of or relating in any way to the sale, condition or performance of the product or this Limited Warranty.

Notice of Dispute. In the event you intend to commence an arbitration proceeding, you must first notify LG in writing at least 30 days in advance of initiating the arbitration by sending a letter to LGECI Legal Team at 20 Norelco Drive, North York,

Ontario, Canada M9L 2X6 (the "Notice of Dispute"). You and LG agree to engage in good faith discussions in an attempt to amicably resolve your claim. The notice must provide your name, address, and telephone number; identify the product that is the subject of the claim; and describe the nature of the claim and the relief being sought. If you and LG are unable to resolve the dispute within 30 days of LG's receipt of the Notice of Dispute, the dispute shall be resolved by binding arbitration in accordance with the procedure set out herein. You and LG both agree that, during the arbitration proceeding, the terms (including any amount) of any settlement offer made by either you or LG will not be disclosed to the arbitrator until the arbitrator determines the dispute.

Agreement to Binding Arbitration and Class Action Waiver. Upon failure to resolve the dispute during the 30 day period after LG's receipt of the Notice of Dispute, you and LG agree to resolve any claims between you and LG only by binding arbitration on an individual basis, unless you opt out as provided below, or you reside in a jurisdiction that prevents full application of this clause in the circumstances of the claims at issue (in which case if you are a consumer, this clause will only apply if you expressly agree to the arbitration). To the extent permitted by applicable law, any dispute between you and LG shall not be combined or consolidated with a dispute involving any other person's or entity's product or claim. More specifically, without limitation of the foregoing, except to the extent such a prohibition is not permitted at law, any dispute between you and LG shall not under any circumstances proceed as part of a class or representative action. Instead of arbitration, either party may bring an individual action in small claims court, but that small claims court action may not be brought on a class or representative basis except to the extent this prohibition is not permitted at law in your province or territory of jurisdiction as it relates to the claims at issue between you and LG.

Arbitration Rules and Procedures. To begin arbitration of a claim, either you or LG must make a written demand for arbitration. The arbitration will be private and confidential, and conducted on a simplified and expedited basis before a single arbitrator chosen by the parties under the provincial or territorial commercial arbitration law and rules of the province or territory of your residence. You must also send a copy of your written demand to LG at LG Electronics, Canada, Inc., Attn: Legal Department- Arbitration, 20 Norelco Drive, North York, Ontario M9L 2X6. This arbitration provision is governed by your applicable provincial or territorial commercial arbitration legislation. Judgment may be entered on the arbitrator's award in any court of competent jurisdiction. All issues are for the arbitrator to decide, except that, issues relating to the scope and enforceability of the arbitration provision and to the arbitrability of the dispute are for the court to decide. The arbitrator is bound by the terms of this provision.

Governing Law. The law of the province or territory of your purchase shall govern this Limited Warranty and any disputes between you and LG except to the extent that such law is preempted by or inconsistent with applicable federal or provincial/territorial law. Should arbitration not be permitted for any claim, action, dispute or controversy between you and LG, you and LG attorn to the exclusive jurisdiction of the courts of the province or territory of your purchase for the resolution of the claim, action, dispute or controversy between you and LG.

Fees/Costs. You do not need to pay any fee to begin an arbitration. Upon receipt of your written demand for arbitration, LG will promptly pay all arbitration filing fees unless you seek more than \$25,000 in damages, in which case the payment of these fees will be governed by the applicable arbitration rules. Except as otherwise provided for herein, LG will pay all filing, administration and arbitrator fees for any arbitration initiated in accordance with the applicable arbitration rules and this arbitration provision. If you prevail in the arbitration, LG will pay your attorneys' fees and expenses as long as they are reasonable, by considering factors including, but not limited to, the purchase amount and claim amount. Notwithstanding the foregoing, if applicable law allows for an award of reasonable attorneys' fees and expenses, an arbitrator can award them to the same extent that a court would. If the arbitrator finds either the substance of your claim or the relief sought in the demand is frivolous or brought for an improper purpose (as measured by the applicable laws), then the payment of all arbitration fees will be governed by the applicable arbitration rules. In such a situation, you agree to reimburse LG for all monies previously disbursed by it that are otherwise your obligation to pay under the applicable arbitration rules. Except as otherwise provided for, LG waives any rights it may have to seek attorneys' fees and expenses from you if LG prevails in the arbitration.

Hearings and Location. If your claim is for \$25,000 or less, you may choose to have the arbitration conducted solely (1) on the basis of documents submitted to the arbitrator, (2) through a telephonic hearing, or (3) by an in-person hearing as established by the applicable arbitration rules. If your claim exceeds \$25,000, the right to a hearing will be determined by the applicable arbitration rules. Any in-person arbitration hearings will be held at the nearest, most mutually-convenient arbitration location available within the province or territory in which you reside unless you and LG both agree to another location or agree to a telephonic arbitration.

Severability and Waiver. If any portion of this Limited Warranty (including these arbitration procedures) is unenforceable, the remaining provisions will continue in full force and effect to the maximum extent permitted by applicable law. Should

LG fail to enforce strict performance of any provision of this Limited Warranty (including these arbitration procedures), it does not mean that LG intends to waive or has waived any provision or part of this Limited Warranty.

**Opt Out.** You may opt out of this dispute resolution procedure. If you opt out, neither you nor LG can require the other to participate in an arbitration proceeding. To opt out, you must send notice to LG no later than 30 calendar days from the date of the first consumer purchaser's purchase of the product by either (i) sending an e-mail to [optout@lge.com](mailto:optout@lge.com), with the subject line: "Arbitration Opt Out;" or (ii) calling 1-800-980-2973. You must include in the opt out e-mail or provide by telephone: (a) your name and address; (b) the date on which the product was purchased; (c) the product model name or model number; and (d) the IMEI or MEID or Serial Number, as applicable (the IMEI or MEID or Serial Number can be found (i) on the product box; (ii) on a label on the back of the product beneath the battery, if the battery is removable; or (iii) from the settings menu via the following path:

**Settings > General > About phone > Status).**

In the event that you "Opt Out," the law of the province or territory of your residence shall govern this Limited Warranty and any disputes between you and LG except to the extent that such law is preempted by or inconsistent with applicable federal or provincial/territorial law. Should arbitration not be permitted for any claim, action, dispute or controversy between you and LG, you and LG agree to attorn to the exclusive jurisdiction of the courts of the province or territory of your residence for the resolution of the claim, action, dispute or controversy between you and LG.

You may only opt out of the dispute resolution procedure in the manner described above (that is, by e-mail or telephone); no other form of notice will be effective to opt out of this dispute resolution procedure. Opting out of this dispute resolution procedure will not affect the coverage of the Limited Warranty in any way, and you will continue to enjoy the full benefits of the Limited Warranty. If you keep this product and do not opt out, then you accept all terms and conditions of the arbitration provision described above.

**Conflict of Terms.** In the event of a conflict or inconsistency between the terms of this Limited Warranty and the End User Licence Agreement ("EULA") in regards to dispute resolution, the terms of this Limited Warranty shall control and govern the rights and obligations of the parties and shall take precedence over the EULA.



**LG**

Life's Good

**Electronics Canada Inc.  
North York ON M9L 2X6**